

Catalog 18



*Providing Quality
Solutions Through
Experience*

Professional Loudspeaker Systems for Ceilings, Walls and Near Field Applications	3
CS Series Downward Firing Loudspeakers for 2x2 Ceiling Grids	4-7
CSD Series Perimeter Firing Loudspeakers for 2x2 Ceiling Grids	8-12
WM Series Retrofit Wall Mount Loudspeakers	13-15
WMBB Series Pre-Construction Wall Mount Loudspeakers with Backboxes	16-18
Near Field Loudspeakers	19-21
70 Volt Transformers For Distributed Sound Systems	22
How to Wire a 70 Volt Sound System	23
Presentation Furniture	24
How to Order Presentation Furniture	25
Essential Line Lecterns	26-27
Essential Line Credenzas	28-29
Essential Line Presentation Desks	30-31
Essential Line Presenter's Carts	32-33
Essential Line Equipment Rack Enclosures	33
Premier Line Lectern Styles	34-35
Premier Line Pedestal Lecterns	36
Premier Line Table Top Lecterns	36
ADA Style Lecterns	37
Wood and Laminate Finish Options	38-39
Premier Line À La Carte Options	40-45
Electrical Height Adjustment Options	46
Corporate, Government and Educational Identity	47
Premier Line Lecterns	48-64
Premier Line Lecterns with Sound Systems	65
Premier Line Desks for Mixing Consoles	66
Premier Line Large Lectern Workstations	67-68
Premier Line Credenzas	69-73
Premier line Presentation Desks	74-78
Premier Line Presenter's Carts	78-79
Premier Line Conference Tables	80-82
More Premier Line Furniture	83

For more than 30 years, KSI Professional has been manufacturing professional loudspeaker systems known for their unique style, accurate acoustical design and unsurpassed performance. Today's digital audio visual systems require even more from your loudspeakers. Our state-of-the-art manufacture and design technology assures you that KSI loudspeakers will meet and exceed your highest expectations.

Thousands of KSI Professional loudspeaker systems have been installed successfully in many of the world's top corporations, government facilities, institutions of higher learning and private residences.

Series IV KSI Loudspeakers utilize State-of-the-art Components

All KSI Series IV loudspeakers share the same components allowing them to be used in perfect unison with each other. Our 5.25" through 8" bass mid transducers offer smooth midrange performance with powerful bass response through the use of our optimally tuned passive radiators. 10" and 12" transducers offer solid powerful bass response in optimally vented enclosures. High frequencies are handled by 1" soft dome, 1" titanium or 25mm horn loaded fabric dome transducers. When combined with premium grade crossover devices and rock solid cabinet construction, all KSI loudspeakers offer unbelievable sound quality, wide and even dispersion, very wide frequency response and high power capacity.

Series IV 2x2 Ceiling Mount Loudspeakers

From our 12-1CS subwoofer to our best selling 8081-CS, all KSI Series IV 2x2 ceiling loudspeakers offer smooth and powerful performance, and give you a wide range of choices for lecture halls, conference rooms, a-v theatres, and any installation demanding superb sound quality with pleasing architectural appearance.

All KSI Series IV 2x2 ceiling loudspeakers are engineered with the "quietest" backboxes in the industry. This is essential in noise sensitive environments with open ceilings. All KSI 2x2 loudspeakers come complete with an acoustically transparent grille and the easy to install package is delivered completely assembled to save you time and money.

Series IV Wall Mount Loudspeakers

When upscale facilities require high end wall mount loudspeakers, KSI Series IV loudspeakers are the solution for superb performance. Our retrofit wall mount systems are designed to quickly and easily install in drywall and other flat substrates. Preconstruction models feature "quiet" backboxes yielding the same high end performance as our ceiling mount and near field loudspeakers. After installation, only the grille is visible assuring a sleek, clean appearance.

Series IV Near Field Loudspeakers

Using the same premium components as our other loudspeakers, KSI Near Field Loudspeakers will meet the demands of today's digital technology. KSI's solution is ideal for any installation demanding superb sound quality and high performance. Audio visual theatres, high tech conference rooms and private residences are great benefactors of KSI's Near Field Loudspeakers.

KSI CS Series IV downward firing ceiling mount loudspeakers offer an unbelievable audio experience. All models provide wide frequency response with extended low end response, high power capacity and wide even dispersion. Applications include corporate, educational, government & retail installations. Installation is fast and easy without cutting tiles and subsequent cleanup.

CS Series IV loudspeakers are incredibly easy to install. Just follow these simple instructions.

- Remove the ceiling tile where you want to place your CS loudspeaker. Remove a second ceiling tile for wiring purposes. See number 1.
- Screw the supplied hooks to the rear of the loudspeaker as in number 2.
- Place the grille into the grid first. Slide the CS loudspeaker up the other opening and rest it on the grille. See number 3.
- Make the wire connections to the electrical input & attach the hooks to the structure above as in number 4. Make absolutely sure all connections meet all local electrical codes. Replace the open tile as in numbers 5 and 6.



801-C



6061-CS



8081-CS



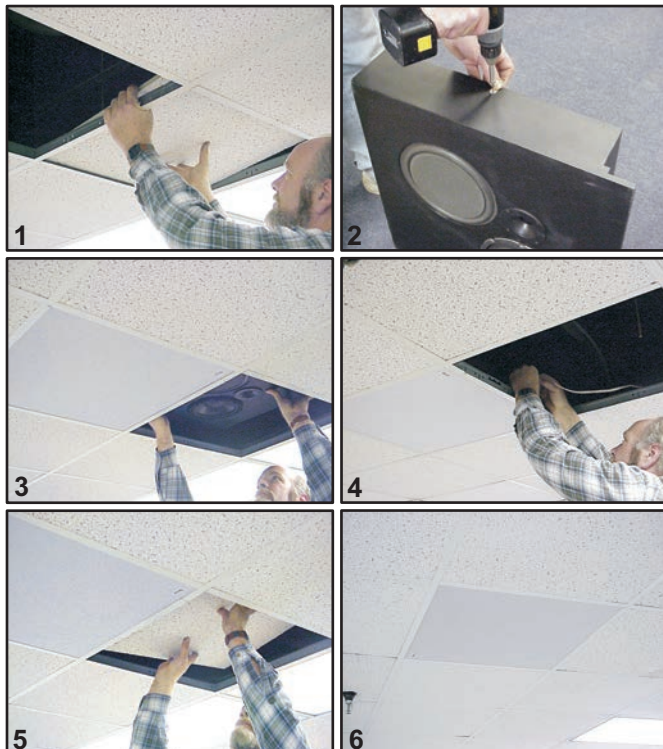
8081-CS-HP



101-CS-HP



12-1CS



KSI CS Downward Firing Loudspeakers Feature

- A clean flush mount profile
- Sealed backboxes - minimizes sound transmission in the ceiling cavity
- Easy retrofit of "CAN" style speakers
- White acoustically transparent grilles
- 8 ohm input
- Optional 70 volt transformers



As an option for plenum spaces and building code requirements, all KSI CS and CSD models are optionally available fabricated from Class 1 Duraf Flake® fire retardant particle board.



Specifications

Frequency Response	55-20,000 HZ +/- 4 db
Sensitivity	92 db (1w/1m)
Power Capacity, watts	40 RMS; 80 Program
Crossover Frequency	3500 HZ passive
Nominal Impedance	8 ohms
Nominal Dispersion	At least 110 degrees up to 6000 HZ
Low Frequency Transducer	8" 1" voice coil
High Frequency Transducer	1" fabric dome
Tuning	None
Enclosure Type	None
Enclosure Dimensions	23-5/8" h x 23-5/8" w x 3-1/2" d
Enclosure Construction	1/2" particle board
Finish	White grille
Electrical Input	Hardwire input
Weight	12 lbs.
Options	70 volt transformers Duraflake Fire rated particle board

The **KSI Series IV 801-C** 2x2 grid ceiling mount loudspeaker is a flat panel loudspeaker designed for mounting in 2x2 grid ceilings. The **801-C** features super quick installation, smooth frequency response and pleasing architectural appearance.

The **801-C** offers smooth midrange performance with smooth bass response through the use of our 8" bass-mid transducer. Our 8" transducer provides accurate voice reproduction for improved intelligibility not found in competitive loudspeakers. Our 1" fabric dome tweeter gives the **801-C** smooth and wide frequency response with moderate power capacity. Since no backbox is employed in the **801-C**, the ceiling cavity above acts as the enclosure to baffle the transducers. The rear of the baffle is covered with acoustical dampening material to aid in smoothing the frequency response when used in large ceiling volumes. This makes the **801-C** ideal for large distributed systems when a very cost effective and quick to install loudspeaker is desired. The **801-C** is also available fabricated from Duraflake fire rated particle board by ordering part number **801-C-FR**.

6061-CS, 6061-CS-FR



Specifications

Frequency Response	50-20,000 HZ +/- 3 db
Sensitivity	91 db (1w/1m)
Power Capacity, watts	50 RMS; 100 Program
Crossover Frequency	3500 HZ passive
Nominal Impedance	8 ohms
Nominal Dispersion	At least 110 degrees up to 6000 HZ
Low Frequency Transducer	6-1/2" 1-1/2" voice coil
High Frequency Transducer	1" titanium dome
Tuning	8" passive radiator
Enclosure Type	Optimally vented
Enclosure Dimensions	23-5/8" h x 23-5/8" w x 3-3/4" d
Enclosure Construction	1/2" MDF lite board w/internal stiffeners
Finish	White grille w/black backbox
Electrical Input	Hardwire input
Weight	21 lbs.
Options	25 & 70.7 volt transformers Duraflake Fire rated particle board

The **KSI Series IV 6061-CS** 2x2 grid ceiling mount loudspeaker is a smaller version of our popular 8081-CS loudspeaker. The **6061-CS** is only 3-3/4" deep making it a good choice for ceilings with limited space, and it's right at home in any installation demanding superb sound quality with pleasing architectural appearance.

The **6061-CS** offers smooth midrange performance with smooth bass response through the use of our 6-1/2" bass-mid transducer and 8" optimally tuned passive radiator. Our 6-1/2" transducer features a paper laminated cone with a large 1-1/2" edgewound voice coil and a vented magnet structure. This transducer renders exceptional voice reproduction for greatly improved intelligibility. The addition of our 1" pure titanium dome tweeter gives the **6061-CS** outstanding clarity and coherence along with wide frequency response and wide dynamic range. The use of high quality filter components assures a smooth transition at the crossover frequency. To further enhance the low frequency and midrange reproduction of the **6061-CS**, the backbox employs our anti-resonance fabrication. This construction technique utilizes our state of the art CNC machinery to give us an incredibly strong, vibration free and low weight enclosure, greatly improving the sound quality over the entire spectrum. The **6061-CS** offers wide and evenly controlled dispersion, outstanding clarity and coherence, with wide frequency response and a 100 watt power capacity. The **6061-CS** is also available fabricated from Duraflake fire rated particle board by ordering part number **6061-CS-FR**.





Specifications

Frequency Response	48-20,000 HZ +/- 3 db
Sensitivity	92 db (1w/1m)
Power Capacity, watts	50 RMS; 100 Program
Crossover Frequency	3500 HZ passive
Nominal Impedance	8 ohms
Nominal Dispersion	At least 110 degrees up to 6000 HZ
Low Frequency Transducer	8" 1-1/2" voice coil
High Frequency Transducer	1" titanium dome
Tuning	10" passive radiator
Enclosure Type	Optimally vented
Enclosure Dimensions	23-5/8" h x 23-5/8" w x 5-3/4" d
Enclosure Construction	1/2" MDF lite board w/internal stiffeners
Finish	White grille w/black backbox
Electrical Input	Hardwire input
Weight	24 lbs.
Options	70 volt transformers Duraflake Fire rated particle board

The **KSI Series IV 8081-CS** 2x2 grid ceiling mount loudspeaker is our most popular model featuring a unique and innovative design in a very cost effective package. It's right at home in any installation demanding superb sound quality with pleasing architectural appearance.

The **8081-CS** offers smooth midrange performance with powerful bass response through the use of our 8" bass-mid transducer and 10" optimally tuned passive radiator. Our 8" transducer features a paper laminated cone with a large 1-1/2" edgewound voice coil and a vented magnet structure. This provides superb voice reproduction for greatly improved intelligibility not found in competitive loudspeakers. Coupling this to our 1" pure titanium dome tweeter gives the **8081-CS** outstanding clarity and coherence along with wide frequency response and wide dynamic range. The use of high quality filter components assures a smooth transition at the crossover frequency. To further enhance the low frequency and midrange reproduction of the **8081-CS**, the backbox employs our anti-resonance fabrication. This construction technique utilizes our state of the art CNC machinery to give us an incredibly strong, vibration free and light weight enclosure, greatly improving the sound quality over the entire spectrum. The **8081-CS** offers wide and evenly controlled dispersion, outstanding clarity and coherence, wide frequency response and a 100 watt power capacity. The **8081-CS** is also available fabricated from Duraflake fire rated particle board by ordering part number **8081-CS-FR**.

8081-CS-HP, 8081-CS-HP-FR



Specifications

Frequency Response	45-20,000 HZ +/- 3 db
Sensitivity	93 db (1w/1m)
Power Capacity, watts	125 RMS; 200 Program
Crossover Frequency	3500 HZ passive
Nominal Impedance	8 ohms
Nominal Dispersion	At least 110 degrees up to 6000 HZ
Low Frequency Transducer	8" cast frame 1-1/2" voice coil
High Frequency Transducer	25mm horn loaded fabric dome
Tuning	10" passive radiator
Enclosure Type	Optimally vented
Enclosure Dimensions	23-5/8" h x 23-5/8" w x 5-1/2" d
Enclosure Construction	1/2" MDF lite board w/internal stiffeners
Finish	White grille w/black backbox
Electrical Input	Hardwire input
Weight	28 lbs.
Options	70 volt transformers Duraflake Fire rated particle board

The **KSI Series IV 8081-CS-HP** 2x2 grid ceiling mount loudspeaker is a high performance high fidelity loudspeaker designed for today's digital environment. The **8081-CS-HP** is the companion to our **8081-CSD-HP** making it a perfect choice for high end installations which demand superb sound quality with pleasing architectural appearance.

The **Series IV 8081-CS-HP** offers smooth midrange performance with powerful bass response through the use of our cast frame 8" bass mid transducer and 10" optimally tuned passive radiator. Our 8" transducer features a lightweight mica filled cone providing exceptional voice and music intelligibility. High frequencies are handled by our 25mm horn loaded dome tweeter, providing very smooth upper octave response for an "open" sound quality with wide dynamic range. We have improved our proprietary filter network using very high tolerance components which are inaudible at the crossover frequency. This provides outstanding clarity and coherence with very wide frequency response and high power capacity. To further enhance the low frequency and midrange performance, we have included our anti-resonance fabrication for the backbox enclosure. Our state of the art CNC machinery gives us the ability to produce an incredibly strong, vibration free low weight enclosure. The **8081-CS-HP** is also available fabricated from Duraflake fire rated particle board by ordering part number **8081-CS-HP-FR**.





Specifications

Frequency Response	45-20,000 HZ +/- 3 db
Sensitivity	93 db (1w/1m)
Power Capacity, watts	125 RMS; 200 Program
Crossover Frequency	3200 HZ passive
Nominal Impedance	8 ohms
Nominal Dispersion	At least 110 degrees up to 6000 HZ
Low Frequency Transducer	10" cast frame 2" voice coil
High Frequency Transducer	25mm horn loaded fabric dome
Tuning	3" tuned port
Enclosure Type	Optimally vented
Enclosure Dimensions	23-5/8" h x 23-5/8" w x 7" d
Enclosure Construction	1/2" MDF lite board w/internal stiffeners
Finish	White grille w/black backbox
Electrical Input	Hardwire input
Weight	30 lbs.
Options	70 volt transformers Duraflake Fire rated particle board

The **KSI Series IV 101-CS-HP** 2x2 grid ceiling mount loudspeaker is a high performance, high power loudspeaker for premium audio environments. The **101-CS-HP** is capable of high output with very low distortion, making it ideal for any installation demanding superb acoustical properties with pleasing architectural appearance.

The **101-CS-HP** offers smooth midrange performance with powerful bass response through the use of our cast frame 10" bass-mid transducer and optimally tuned vented enclosure. This transducer features a lightweight mica filled cone with a rubber surround, a 2" edgewound voice coil and a huge vented magnet structure. This combination provides exceptional voice and music intelligibility, so important where vocal articulation is of paramount concern. High frequencies are handled by our 25mm horn loaded dome transducer, providing very smooth upper octave response for an "open" sound quality with wide dynamic range. We have improved our proprietary filter network using very high tolerance components which are inaudible at the crossover frequency. This provides outstanding clarity and coherence with very wide frequency response and high power capacity. Our state of the art CNC machinery gives us an incredibly strong, vibration free and low weight enclosure, greatly improving the sound quality over the entire spectrum. As a result, the **101-CS-HP** yields wide and evenly controlled dispersion, outstanding clarity and coherence and very wide frequency response with high power capacity. The **101-CS-HP** is also available fabricated from Duraflake fire rated particle board by ordering part number **101-CS-HP-FR**.

12-1CS, 12-1CS-FR



Specifications

Frequency Response	40-250 HZ +/- 3 db
Sensitivity	93 db (1w/1m)
Power Capacity, watts	150 RMS; 290 Program
Crossover Frequency	up to 250 HZ active
Nominal Impedance	8 ohms
Nominal Dispersion	At least 130 degrees
Low Frequency Transducer	12" cast frame 2" voice coil
Enclosure Type	Optimally vented w/tuned port
Enclosure Dimensions	23-5/8" h x 23-5/8" w x 10" d
Enclosure Construction	1/2" particle board w/internal stiffeners
Finish	White grille w/black backbox
Electrical Input	Hardwire input
Weight	32 lbs.
Options	Duraflake Fire rated particle board

The **KSI 12-1CS Series IV** ceiling mount subwoofer is the ideal choice for extended low frequency reproduction when mounting in a 2x2 grid is specified. As with all **KSI** ceiling mount loudspeakers, the **12-1CS** offers exceptional performance, solid bass response and high dynamic range.

The **KSI 12-1CS** features our high power 1258-8 12" cast frame transducer producing very smooth extended low frequency reproduction in a small enclosure that is a requirement of a 2x2 grid mounting system. The 1258-8 features a 2" high temperature voice coil and powerful magnet structure, making the **12-1CS** highly efficient at converting electrical energy into acoustical energy. To enhance performance, the **12-1CS** incorporates an optimally vented, stiff and lightweight enclosure. To provide the best performance, the **12-1CS** should be connected to a high quality power amplifier and an active crossover. The recommended crossover frequency should be no higher than 250 hz. The **12-1CS** is also available fabricated from Duraflake fire rated particle board by ordering part number **12-1CS-FR**.



KSI CSD Series IV directional firing ceiling mount loudspeakers offer a unique wedge design that hangs below the ceiling grid, providing very wide horizontal dispersion. All CSD Series IV loudspeakers are ideal for front of room applications, perimeter surround applications, or any situation requiring a focused sound field. Installation is fast and easy without cutting tiles and subsequent cleanup.

CSD Series IV loudspeakers are easy to install, just follow these simple instructions.

- Remove the ceiling tile where you want to place your CSD loudspeaker. Remove a second ceiling tile for wiring purposes.
- Screw the supplied hooks to the rear of the loudspeaker, as in number 1.
- Slide the CSD loudspeaker up through the other opening and rest it on the grid. See number 2. The loudspeaker should look as it does in number 3.
- Make the wire connections to the electrical input & attach the hooks to the structure above. Make absolutely sure all connections meet all local electrical codes. Snap on the grille and replace the other tile.



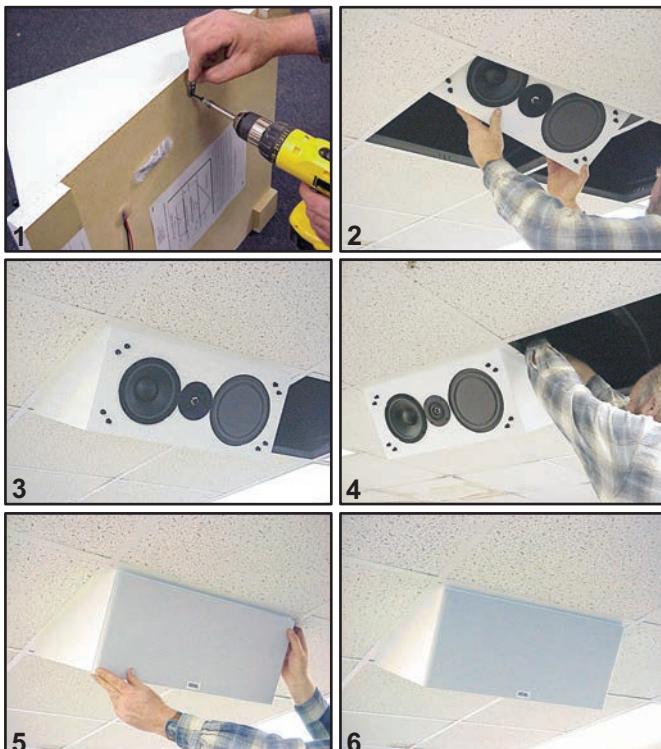
6061-CSD



8081-CSD



8081-CSD-HP



KSI CSD Perimeter Firing Loudspeakers Feature

- A unique wedge design which hangs below the ceiling grid
- Directional sound fields
- Front screen sound applications
- Optional swivel mount - creates a sound field independent of the grid
- 8 ohm input
- Optional 70 volt transformers



As an option for plenum spaces and building code requirements, all KSI CS and CSD models are optionally available fabricated from Class 1 Duraflake® fire retardant particle board.



Swivels
360°

Three models to choose from

KSI CSD Swivel Directional Firing Loudspeakers Feature



6061-CSD-SW



8081-CSD-SW



8081-CSD-HP-SW

- Same as the CSD series with the addition of a swivel mount
- Provides an opportunity to refine the directionality of your design without the constraints of the ceiling grid
- Ideal as a solution for limited space above the ceiling grid, only requires 2 inches above the grid



As an option for plenum spaces and building code requirements, all KSI CS and CSD models are optionally available fabricated from Class 1 Duraflake® fire retardant particle board.



Specifications

Frequency Response	50-20,000 HZ +/- 3 db
Sensitivity	91 db (1w/1m)
Power Capacity, watts	50 RMS; 100 Program
Crossover Frequency	3500 HZ passive
Nominal Impedance	8 ohms
Nominal Dispersion	At least 110 degrees up to 6000 HZ
Low Frequency Transducer	6-1/2" 1-1/2" voice coil
High Frequency Transducer	1" titanium dome
Tuning	8" passive radiator
Enclosure Type	Optimally vented
Enclosure Dimensions	23-5/8" h x 23-5/8" w x 8" d
Enclosure Construction	1/2" MDF lite board w/internal stiffeners
Finish	White grille w/white backbox
Electrical Input	Hardwire input
Weight	21 lbs.
Options	70 volt transformers Duraflake Fire rated particle board

The **KSI Series IV 6061-CSD** is the companion to our **6061-CS** and a smaller version of our popular **8081-CSD**. KSI's unique and innovative loudspeakers are right at home in corporate, government, institutional and retail installations which benefit from the superb sound quality and pleasing architectural appearance.

The **6061-CSD** offers smooth midrange performance with powerful bass response through the use of our 6.5" bass-mid transducer and 8" optimally tuned passive radiator. KSI's 6.5" transducer renders exceptional voice reproduction for improved intelligibility. The addition of our 1" pure titanium dome tweeter produces exceptionally clean sound reproduction and wide frequency response with moderate power capacity. To further enhance the low frequency and midrange performance of the **6061-CSD**, the backbox features our anti-resonance construction. Our state of the art CNC machinery gives us the ability to produce an incredibly strong, vibration free and light weight enclosure, which greatly improves sound quality over the entire spectrum. The front baffle is precisely angled to render accurate imaging and spatial detail, which assures faithful reproduction of dialogue and complex digital audio when used in a left, center and right configuration for video. The **6061-CSD** is also available fabricated from Duraflake fire rated particle board by ordering part number **6061-CSD-FR**.

6061-CSD-SW, 6061-CSD-SW-FR



Specifications

Frequency Response	50-20,000 HZ +/- 3 db
Sensitivity	91 db (1w/1m)
Power Capacity, watts	50 RMS; 100 Program
Crossover Frequency	3500 HZ passive
Nominal Impedance	8 ohms
Nominal Dispersion	At least 110 degrees up to 6000 HZ
Low Frequency Transducer	6-1/2" 1-1/2" voice coil
High Frequency Transducer	1" titanium dome
Tuning	8" passive radiator
Enclosure Type	90 degrees nominal
Swivel Adjustment	Optimally vented
Enclosure Dimensions	23-5/8" l x 23-5/8" w x 8" d
Enclosure Construction	1/2" MDF lite board w/internal stiffeners
Finish	White grille w/white backbox
Electrical Input	Hardwire input
Weight	22 lbs.
Options	70 volt transformers

The **KSI 6061-CSD-SW** 2x2 grid adjustable swivel ceiling mount loudspeaker is a high fidelity loudspeaker and the companion to our popular **6061-CSD** and **6061-CS**. The unique and innovative design of the **6061-CSD-SW** makes it a perfect choice for corporate, government, retail and any installation demanding superb sound quality with pleasing architectural appearance.

The **6061-CSD-SW** allows the user precise control of the acoustical sound field through the use of KSI's innovative adjustable swivel mounting system. Our standard 2x2 CSD loudspeakers have been limited to the alignment of the ceiling grid to determine which direction they project. Now, you can adjust the loudspeaker around a 90 degree center axis, thereby guaranteeing optimal acoustical performance. Adjustments are made simple and quick with the use of a standard hex wrench. Once the angle of adjustment has been determined, the installer simply tightens a single securing bolt to lock the **6061-CSD-SW** in place. The **6061-CSD-SW** is also available fabricated from Duraflake fire rated particle board by ordering part number **6061-CSD-SW-FR**.



Specifications

Frequency Response	48-20,000 HZ +/- 3 db
Sensitivity	92 db (1w/1m)
Power Capacity, watts	50 RMS; 100 Program
Crossover Frequency	3500 HZ passive
Nominal Impedance	8 ohms
Nominal Dispersion	At least 110 degrees up to 6000 HZ
Low Frequency Transducer	8" 1-1/2" voice coil
High Frequency Transducer	1" titanium dome
Tuning	10" passive radiator
Enclosure Type	Optimally vented
Enclosure Dimensions	23-5/8" h x 23-5/8" w x 10" d
Enclosure Construction	1/2" MDF lite board w/internal stiffeners
Finish	White grille w/white backbox
Electrical Input	Hardwire input
Weight	24 lbs.
Options	70 volt transformers Duraflake Fire rated particle board

The **KSI Series IV 8081-CSD** 2x2 grid ceiling mount loudspeaker is a high fidelity loudspeaker and the companion to our popular **8081-CS**. The unique and innovative design of the **8081-CSD** makes it a perfect choice for corporate, government, retail and any installation demanding superb sound quality with pleasing architectural appearance.

The **8081-CSD** offers smooth midrange performance with powerful bass response through the use of our 10" optimally tuned passive radiator. Our 8" transducer provides superb voice reproduction for greatly improved intelligibility not found in competitive loudspeakers. Coupling this to our 1" titanium dome tweeter gives the **8081-CSD** outstanding clarity and coherence along with wide frequency response and moderate power capacity. To further enhance the low frequency and midrange performance of the **8081-CSD**, we have included our anti-resonance fabrication for the backbox enclosure. Our state of the art CNC machinery gives us the ability to produce an incredibly strong, vibration free and low weight enclosure, which greatly improves sound quality over the entire spectrum. The front baffle is precisely angled to render accurate imaging and spatial detail, which assures faithful reproduction of dialogue and complex digital audio when used in a left, center and right configuration for video. The **8081-CSD** is also available fabricated from Duraflake fire rated particle board by ordering part number **8081-CSD-FR**.

8081-CSD-SW, 8081-CSD-SW-FR



Specifications

Frequency Response	48-20,000 HZ +/- 3 db
Sensitivity	92 db (1w/1m)
Power Capacity, watts	50 RMS; 100 Program
Crossover Frequency	3500 HZ passive
Nominal Impedance	8 ohms
Nominal Dispersion	At least 110 degrees up to 6000 HZ
Low Frequency Transducer	8" 1-1/2" voice coil
High Frequency Transducer	1" titanium dome
Tuning	10" passive radiator
Enclosure Type	90 degrees nominal
Swivel Adjustment	Optimally vented
Enclosure Dimensions	23-5/8" h x 23-5/8" w x 10" d
Enclosure Construction	1/2" MDF lite board w/internal stiffeners
Finish	White grille w/white backbox
Electrical Input	Hardwire input
Weight	24 lbs.
Options	70 volt transformers

The **KSI 8081-CSD-SW** 2x2 grid adjustable swivel ceiling mount loudspeaker is a high fidelity loudspeaker and the companion to our popular **8081-CSD**. The unique and innovative design of the **8081-CSD-SW** makes it a perfect choice for corporate, government, retail and any installation demanding superb sound quality with pleasing architectural appearance.

The **8081-CSD-SW** allows the user precise control of the acoustical sound field through the use of KSI's innovative adjustable swivel mounting system. Up until now, our 2x2 CSD loudspeakers have been limited to the alignment of the ceiling grid to determine which direction they fire. Now, you can adjust the loudspeaker around a 90 degree center axis, thereby guaranteeing optimal acoustical performance. Adjustments are made simple and quick with the use of a standard hex wrench. Once the angle of adjustment has been determined, the installer simply tightens a single securing bolt to lock the **8081-CSD-SW** in place. The **8081-CSD-SW** is also available fabricated from Duraflake fire rated particle board by ordering part number **8081-CSD-SW-FR**.





Specifications

Frequency Response	48-20,000 HZ +/- 3 db
Sensitivity	93 db (1w/1m)
Power Capacity, watts	125 RMS; 200 Program
Crossover Frequency	3500 HZ passive
Nominal Impedance	8 ohms
Nominal Dispersion	At least 110 degrees up to 6000 HZ
Low Frequency Transducer	8" cast frame 1-1/2" voice coil
High Frequency Transducer	25mm horn loaded fabric dome
Tuning	10" passive radiator
Enclosure Type	Optimally vented
Enclosure Dimensions	23-5/8" h x 23-5/8" w x 10" d
Enclosure Construction	1/2" MDF lite board w/internal stiffeners
Finish	White grille w/white backbox
Electrical Input	Hardwire input
Weight	28 lbs.
Options	70 volt transformers Duraflake Fire rated particle board

The **KSI Series IV 8081-CSD-HP** 2x2 grid ceiling mount loudspeaker is a high performance high fidelity loudspeaker designed for today's digital environment. The **8081-CSD-HP** is the companion to our **8081-CS-HP** making it a perfect choice for high end installations which demand superb sound quality with pleasing architectural appearance.

The **Series IV 8081-CSD-HP** offers smooth midrange performance with powerful bass response through the use of our cast frame 8" bass mid transducer and 10" optimally tuned passive radiator. Our 8" transducer features a lightweight mica filled cone providing exceptional voice and music intelligibility. High frequencies are handled by our 25mm horn loaded dome tweeter, providing very smooth upper octave response for an "open" sound quality with wide dynamic range. We have improved our proprietary filter network using very high tolerance components which are inaudible at the crossover frequency. This provides outstanding clarity and coherence with very wide frequency response and high power capacity. To further enhance the low frequency and midrange performance, we have included our anti-resonance fabrication for the backbox enclosure. Our state of the art CNC machinery gives us the ability to produce an incredibly strong, vibration free low weight enclosure. The front baffle is precisely angled to render accurate imaging and spatial detail, which assures faithful reproduction of dialogue and complex digital audio when used in a left, center and right configuration for video. The **8081-CSD-HP** is also available fabricated from Duraflake fire rated particle board by ordering part number **8081-CSD-HP-FR**.



Specifications

Frequency Response	48-20,000 HZ +/- 3 db
Sensitivity	93 db (1w/1m)
Power Capacity, watts	125 RMS; 200 Program
Crossover Frequency	3500 HZ passive
Nominal Impedance	8 ohms
Nominal Dispersion	At least 110 degrees up to 6000 HZ
Low Frequency Transducer	8" cast frame 1-1/2" voice coil
High Frequency Transducer	25mm horn loaded fabric dome
Tuning	10" passive radiator
Enclosure Type	Optimally vented
Swivel Adjustment	90 degrees nominal
Enclosure Dimensions	23-5/8" h x 23-5/8" w x 10" d
Enclosure Construction	1/2" MDF lite board w/internal stiffeners
Finish	White grille w/white backbox
Electrical Input	Hardwire input
Weight	28 lbs.
Options	70 volt transformers

8081-CSD-HP-SW, 8081-CSD-HP-SW-FR

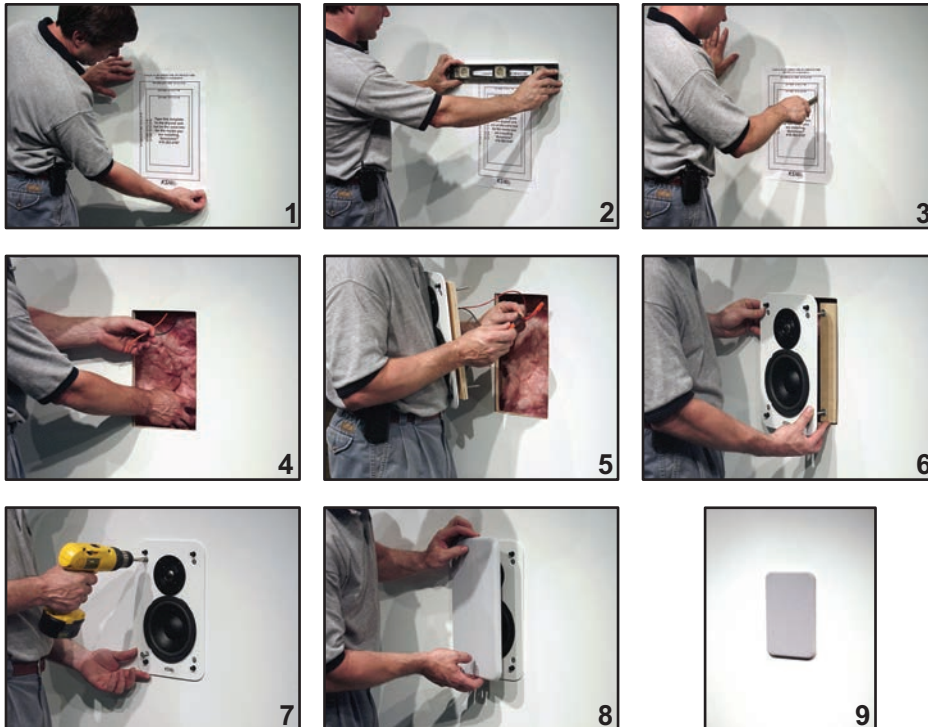
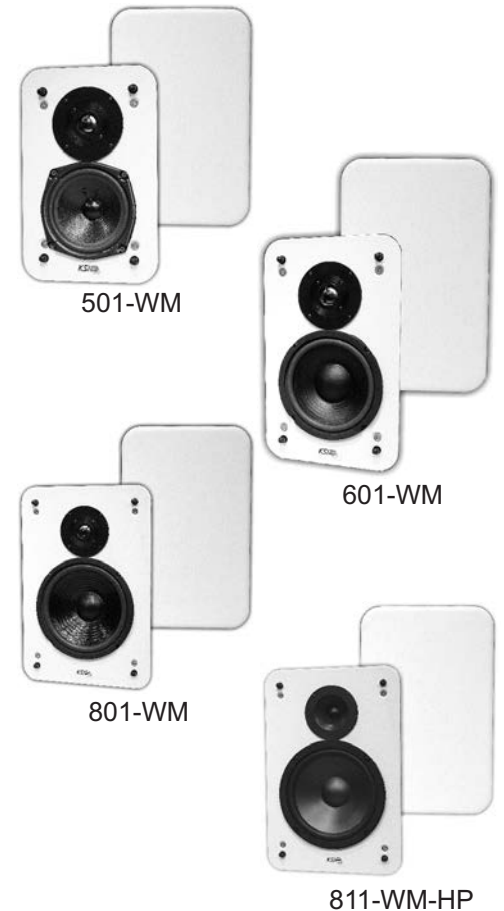
The **KSI Series IV 8081-CSD-HP-SW** 2x2 grid adjustable swivel ceiling mount loudspeaker is a high performance loudspeaker and the companion to our popular **8081-CS-HP**. The unique and innovative design of the **8081-CSD-HP-SW** makes it a perfect choice for corporate, government, retail and any installation demanding superb sound quality with pleasing architectural appearance.

The **8081-CSD-HP-SW** allows the user precise control of the acoustical sound field through the use of KSI's innovative adjustable swivel mounting system. Now, you can adjust the loudspeaker around a 90 degree center axis, thereby guaranteeing optimal acoustical performance. Adjustments are made simple and quick with the use of a standard hex wrench. Once the rotation has been determined, the installer simply tightens a single securing bolt to lock the **8081-CSD-HP-SW** in place. The **8081-CSD-HP-SW** is also available fabricated from Duraflake fire rated particle board by ordering part number **8081-CSD-SW-FR**.

KSI Series IV Wall Mount Loudspeakers offer traditional KSI performance, all in an easy to install package. The 501-WM, 601-WM, 801-WM and 811-WMHP Series IV loudspeakers are designed to quickly mount in existing flat substrates up to 2" thick. All wall mount models work seamlessly with all other KSI loudspeakers, providing ultimate flexibility for your audio environment.

WM Series IV wall mount loudspeakers are easy to install. Just follow these simple instructions.

- Tape the cutout template to the wall at the desired location, Make sure the template is level and plumb. See pictures 1 and 2.
- Use a drywall saw and cut out the template for the model loudspeaker you have. See picture 3.
- Add fiberglass insulation (**not included**) into the wall cavity and pull the wires through the opening. See picture 4.
- Connect the wires on the loudspeaker to the wires in the wall using wire nuts. See picture 5.
- Place the loudspeaker into the opening and tighten the four screws on the clamps. See pictures 6 and 7. Snap on the grille. See pictures 6 and 7.



KSI WM Retro-fit Wall Mount Loudspeakers Feature

- Quick installation
- Two clamp mounting for drywall and other flat substrates
- Superb sound quality
- 8 ohm input
- Optional 70 volt transformers



Specifications

Frequency Response	60-20,000 HZ +/- 4 db
Sensitivity	90 db (1w/1m)
Power Capacity, watts	50 RMS; 100 Program
Crossover Frequency	3500 HZ passive
Nominal Impedance	8 ohms
Nominal Dispersion	At least 110 degrees up to 6000 HZ
Low Frequency Transducer	5-1/4" - 1-1/2" voice coil
High Frequency Transducer	1" titanium dome
Enclosure Type	No backbox, retrofit baffle
Cutout Dimensions	10" h x 6" w
Baffle Dimensions	11.5" h x 7.5" w x 2.5" d
Grille Dimensions	11.5" h x 7.5" w x .5" d
Mounting System	KSI continuous compression clamps
Finish	White grille & baffle
Electrical Input	Hardwire input
Weight	4 lbs.
Options	70 volt transformers

The **KSI Series IV 501-WM** is our smallest wall mount loudspeaker and is designed for fast & easy mounting in drywall and other flat substrates. It is designed for retrofit applications in existing substrates, hence the absence of a backbox. It's a perfect choice for corporate, government, retail and private residences requiring wall & ceiling mounted loudspeakers with high end performance and pleasing architectural appearance.

The **501-WM** offers smooth midrange and bass response through the use of our 5.25" bass-mid transducer. Our 5.25" transducer provides exceptional voice reproduction making the **501-WM** a great loudspeaker for video and dialogue applications. Our 1" pure titanium dome tweeter gives the **501-WM** outstanding clarity and coherence with wide frequency response and even controlled dispersion. Mounting is fast & easy with our continuous compression clamps. After a cutout of 10" h x 6" w is made, fiberglass dampening should be added to the wall cavity to provide smoother frequency response. Simply wire the **501-WM**, place it through the opening, tighten the clamps and snap on the grille.

601-WM



Specifications

Frequency Response	55-20,000 HZ +/- 4 db
Sensitivity	91 db (1w/1m)
Power Capacity, watts	50 RMS; 100 Program
Crossover Frequency	3500 HZ passive
Nominal Impedance	8 ohms
Nominal Dispersion	At least 110 degrees up to 6000 HZ
Low Frequency Transducer	6-1/2" - 1-1/2" voice coil
High Frequency Transducer	1" titanium dome
Enclosure Type	No backbox, retrofit baffle
Cutout Dimensions	12" h x 7" w
Baffle Dimensions	13.5" h x 8.5" w x 2.5" d
Grille Dimensions	13.5" h x 8.5" w x .5" d
Mounting System	KSI continuous compression clamps
Finish	White grille & baffle
Electrical Input	Hardwire input
Weight	5 lbs.
Options	70 volt transformers

The **KSI Series IV 601-WM** is a mid sized wall mount loudspeaker designed for fast & easy mounting in drywall and other flat substrates. It is designed for retrofit applications in existing substrates, hence the absence of a backbox. It's a perfect choice for corporate, government, retail and private residences requiring wall & ceiling mounted loudspeakers with high end performance and pleasing architectural appearance.

The **601-WM** offers smooth midrange and bass response through the use of our 6.5" bass-mid transducer. Our 6.5" transducer provides exceptional voice reproduction making the **601-WM** a fine loudspeaker for video and dialogue applications. Our 1" pure titanium dome tweeter gives the **601-WM** outstanding clarity and coherence with wide frequency response and even controlled dispersion. Mounting is fast & easy with our continuous compression clamps. After a cutout of 12" h x 7" w is made, fiberglass dampening should be added to the wall cavity to provide smoother frequency response. Simply wire the **601-WM**, place it through the opening and tighten the clamps. Snap on the grille and you're finished! This fast installation procedure is ideal for facilities where down time is of paramount concern.



Specifications

Frequency Response	50-20,000 HZ +/- 4 db
Sensitivity	92 db (1w/1m)
Power Capacity, watts	50 RMS; 100 Program
Crossover Frequency	3500 HZ passive
Nominal Impedance	8 ohms
Nominal Dispersion	At least 110 degrees up to 6000 HZ
Low Frequency Transducer	8" - 1-1/2" voice coil
High Frequency Transducer	1" titanium dome
Enclosure Type	No backbox, retrofit baffle
Cutout Dimensions	14" h x 9" w
Baffle Dimensions	15.5" h x 10.5" w x 3.5" d
Grille Dimensions	15.5" h x 10.5" w x .5" d
Mounting System	KSI continuous compression clamps
Finish	White grille & baffle
Electrical Input	Hardwire input
Weight	7 lbs.
Options	70 volt transformers

The **KSI Series IV 801-WM** is the wall mount companion to our popular **801-C** for fast & easy mounting in drywall and other flat substrates. It is designed for retrofit applications in existing substrates, hence the absence of a backbox. It's a perfect choice for corporate, government, retail and private residences requiring wall & ceiling mounted loudspeakers with high end performance and pleasing architectural appearance.

The **801-WM** offers smooth midrange and bass response through the use of our 8" bass-mid transducer. Our 8" transducer provides exceptional voice reproduction making the **801-WM** a fine loudspeaker for video, music and dialogue applications. Our 1" pure titanium dome tweeter gives the **801-WM** outstanding clarity and coherence with wide frequency response and even controlled dispersion. Mounting is fast & easy with our continuous compression clamps. After a cutout of 14" h x 9" w is made, fiberglass dampening should be added to the wall cavity to provide smoother frequency response. Simply wire the **801-WM**, place it through the opening and tighten the clamps. This fast installation procedure is ideal for facilities where down time is of paramount concern.

811-WM-HP



Specifications

Frequency Response	45-20,000 HZ +/- 3 db
Sensitivity	93 db (1w/1m)
Power Capacity, watts	125 RMS; 200 Program
Crossover Frequency	3500 HZ passive
Nominal Impedance	8 ohms
Nominal Dispersion	At least 110 degrees up to 6000 HZ
Low Frequency Transducer	8" cast frame - 1-1/2" voice coil
High Frequency Transducer	25mm horn loaded fabric dome
Enclosure Type	No backbox, retrofit baffle
Cutout Dimensions	14" h x 9" w
Baffle Dimensions	15.5" h x 10.5" w x 3.5" d
Grille Dimensions	15.5" h x 10.5" w x .5" d
Mounting System	KSI continuous compression clamps
Finish	White grille & baffle
Electrical Input	Hardwire input
Weight	12 lbs.
Options	70 volt transformers

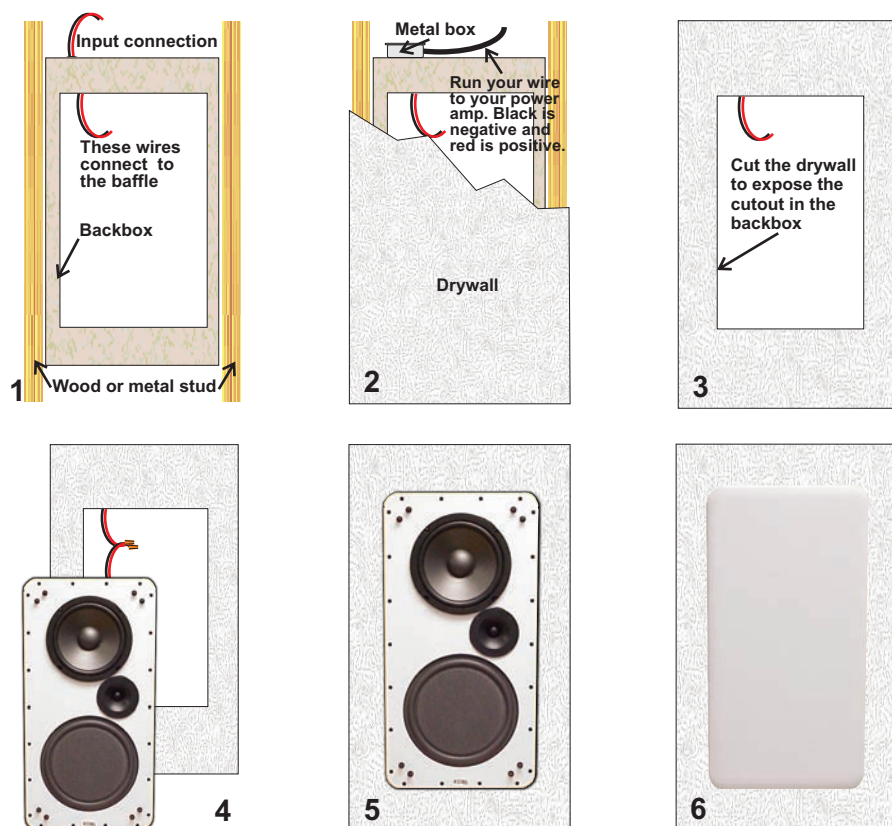
The **KSI Series IV 811-WM-HP** is a high performance wall mount loudspeaker designed for fast & easy mounting in drywall and other flat substrates. It is designed for retrofit applications in existing substrates, hence the absence of a backbox. It's a perfect choice for corporate, government, retail and private residences requiring wall mounted loudspeakers with high end performance and pleasing architectural appearance.

The **811-WM-HP** offers smooth midrange and bass response through the use of our 8" cast frame bass-mid transducer. This 8" transducer features a lightweight mica filled cone providing exceptional voice and music intelligibility. High frequencies are handled by our 25mm horn loaded dome tweeter. This high end transducer provides very smooth upper octave response for an "open" sound quality with wide dynamic range. We have improved our proprietary filter network using very high tolerance components which are inaudible at the crossover frequency. This provides outstanding clarity and coherence with very wide frequency response and high power capacity. This careful attention to detail has led to a loudspeaker with outstanding clarity and coherence along with very wide frequency response and high power capacity. Mounting is fast & easy with our continuous compression clamps. After a cutout of 14" h x 9" w is made, fiberglass dampening should be added to the wall cavity to provide smoother frequency response. Simply wire the **811-WM-HP**, place it through the opening and tighten the clamps. Snap on the grille and you're finished! This fast installation procedure is ideal for facilities where down time is of paramount concern.

The KSI 501-WMBB, 601-WMBB, 801-WMBB and 811-WMBB-HP feature sealed backboxes yielding the same high performance as our 2x2 ceiling loudspeakers. Backboxes are designed to mount in either 2x4 or 2x6 wall cavities on 16" centers. Only the grille is visible when the installation is complete.

WMBB Series IV wall/ceiling mount loudspeakers are easy to install. Just follow these simple instructions.

- Remove the baffle from the backbox and set aside.
- Mount the backbox between two studs 16" on center. See number 1.
- Use a metal box and make the wire connection to the backbox. You can now drywall over the backbox. See number 2.
- Use a drywall saw and cut out along the opening in the backbox. See number 3.
- Connect the wires from the baffle to the wires in the backbox using the wire nuts. Make sure the connection is secure. See number 4.
- Screw the baffle onto the backbox. Make certain the baffle is plumb and level as in number 5. Snap on the grille.



KSI WMBB Pre-Construction Wall Mount Loudspeakers Feature

- Sealed backboxes
- Sized for 2x4 and 2x6 16" center wall cavities
- Superb sound quality
- 8 ohm input
- Optional 70 volt transformers



Specifications

Frequency Response	55-20,000 HZ +/- 3 db
Sensitivity	90 db (1w/1m)
Power Capacity, watts	50 RMS; 90 Program
Crossover Frequency	3500 HZ passive
Nominal Impedance	8 ohms
Nominal Dispersion	At least 110 degrees up to 6000 HZ
Low Frequency Transducer	5-1/4" - 1-1/2" voice coil
High Frequency Transducer	1" titanium dome
Tuning	8" passive radiator
Enclosure Type	Optimally vented
Enclosure Dimensions	22-1/2" h x 14" w x 3-1/2" d
Grille Dimensions	19-1/2" h x 10" w x .5" d
Enclosure Construction	1/2" Baltic birch & Particle Board
Finish	White grille & baffle
Electrical Input	Hardwire input
Weight	21 lbs.
Options	70 volt transformers, Duraflake FR

The **KSI Series IV 501-WMBB** is the smallest loudspeaker in our line of Series IV wall mount loudspeakers. It is designed for clean mounting in drywall and other flat substrates. It's the perfect choice for corporate, government, retail, private residences and any installation demanding superb sound quality with pleasing architectural appearance.

The **501-WMBB** offers smooth midrange and bass response through the use of our 5.25" bass-mid transducer and 8" optimally tuned passive radiator. Our 5.25" transducer faithfully reproduces the midrange frequencies so critical for voice and dialogue applications. Coupling this to our 1" pure titanium dome tweeter gives the **501-WMBB** outstanding clarity and coherence along with wide frequency response and moderate power capacity. The backbox is designed to mount into a 2x4 wall cavity on 16" centers prior to the drywall installation. The drywall installer simply trims out the backbox opening as with any light fixture or outlet. After painting and finishing of the drywall, the **501-WMBB** baffle can be quickly reinstalled into the opening to complete the job. The **501-WMBB** is available with its backbox fabricated from Duraflake fire rated particle board by ordering part number **501-WMBB-FR**.

601-WMBB, 601-WMBB-FR



Specifications

Frequency Response	50-20,000 HZ +/- 3 db
Sensitivity	91 db (1w/1m)
Power Capacity, watts	50 RMS; 100 Program
Crossover Frequency	3500 HZ passive
Nominal Impedance	8 ohms
Nominal Dispersion	At least 110 degrees up to 6000 HZ
Low Frequency Transducer	6-1/2" - 1-1/2" voice coil
High Frequency Transducer	1" titanium dome
Tuning	8" passive radiator
Enclosure Type	Optimally vented
Enclosure Dimensions	26" h x 14" w x 3-1/2" d
Grille Dimensions	21" h x 10" w x .5" d
Enclosure Construction	1/2" Baltic birch & Particle Board
Finish	White grille & baffle
Electrical Input	Hardwire input
Weight	24 lbs.
Options	70 volt transformers

The **KSI Series IV 601-WMBB** is a mid sized wall mount loudspeaker with a rear backbox designed for clean mounting in drywall and other flat substrates. It's a perfect choice for corporate, government, retail, private residences and any installation demanding superb sound quality with pleasing architectural appearance.

The **601-WMBB** offers smooth midrange and bass response through the use of our 6.5" bass-mid transducer and 8" optimally tuned passive radiator. Our 6.5" transducer provides exceptional voice reproduction making the **601-WMBB** a fine loudspeaker for video and dialogue applications. Our 1" pure titanium dome tweeter gives the **601-WMBB** outstanding clarity and coherence with wide frequency response and moderate power capacity. The backbox is designed to mount into a 2x4 wall cavity on 16" centers prior to the drywall installation. The drywall installer simply trims out the backbox opening as with any light fixture or outlet. After painting and finishing of the drywall, the **601-WMBB** baffle can be quickly reinstalled into the opening to complete the job. The **601-WMBB** is optionally available with its backbox fabricated from Duraflake fire rated particle board by ordering part number **601-WMBB-FR**.



Specifications

Frequency Response	48-20,000 HZ +/- 3 db
Sensitivity	92 db (1w/1m)
Power Capacity, watts	50 RMS; 100 Program
Crossover Frequency	3500 HZ passive
Nominal Impedance	8 ohms
Nominal Dispersion	At least 110 degrees up to 6000 HZ
Low Frequency Transducer	8" 1-1/2" voice coil
High Frequency Transducer	1" titanium dome
Tuning	10" passive radiator
Enclosure Type	Optimally vented
Enclosure Dimensions	32" h x 14" w x 5-1/2" d
Grille Dimensions	24-1/2" h x 12-1/2" w x .5" d
Enclosure Construction	1/2" Baltic birch & Particle Board
Finish	White grille & baffle
Electrical Input	Hardwire input
Weight	28 lbs.
Options	70 volt transformers

The **KSI Series IV 801-WMBB** is the wall mount companion to our popular **8081-CS**. It is designed for clean mounting in drywall and other flat substrates. It's a perfect choice for corporate, government, retail and any installation demanding superb sound quality with pleasing architectural appearance.

The **801-WMBB** offers smooth midrange performance with powerful bass response through the use of our 8" bass-mid transducer and 10" optimally tuned passive radiator. Our 8" transducer provides superb voice reproduction for greatly improved intelligibility not found in competitive loudspeakers. Coupling this to our 1" pure titanium dome tweeter yields a loudspeaker with outstanding clarity and coherence along with wide frequency response and moderate power capacity. The backbox is designed to mount into a 2x6 wall cavity on 16" centers prior to the drywall installation. The drywall installer simply trims out the backbox opening as with any light fixture or outlet. After painting and finishing the drywall, the **801-WMBB** baffle is reinstalled into the opening to complete the job. The **801-WMBB** is available with its backbox fabricated from Duraflake fire rated particle board by ordering part number **801-WMBB-FR**.

811-WMBB-HP, 811-WMBB-HP-FR



Specifications

Frequency Response	45-20,000 HZ +/- 3 db
Sensitivity	93 db (1w/1m)
Power Capacity, watts	125 RMS; 200 Program
Crossover Frequency	3500 HZ passive
Nominal Impedance	8 ohms
Nominal Dispersion	At least 110 degrees up to 6000 HZ
Low Frequency Transducer	8" cast frame - 1-1/2" voice coil
High Frequency Transducer	25mm horn loaded fabric dome
Tuning	10" passive radiator
Enclosure Type	Optimally vented
Enclosure Dimensions	32" h x 14" w x 5-1/2" d
Grille Dimensions	24-1/2" h x 12-1/2" w x .5" d
Enclosure Construction	1/2" Baltic birch & Particle Board
Finish	White grille & baffle
Electrical Input	Hardwire input
Weight	32 lbs.
Options	70 volt transformers

The **KSI Series IV 811-WMBB-HP** is the wall mount companion to our **8081-CS-HP**. It is designed for clean mounting in drywall and other flat substrates. It's a perfect choice for corporate, government, retail and any installation demanding superb sound quality with pleasing architectural appearance.

The **811-WMBB-HP** offers smooth midrange performance with powerful bass response through the use of our cast frame 8" bass mid transducer and 10" optimally tuned passive radiator. Our 8" transducer features a lightweight mica filled cone providing exceptional voice and music intelligibility. High frequencies are handled by our 25mm horn loaded dome tweeter, providing very smooth upper octave response for an "open" sound quality with wide dynamic range. We have improved our proprietary filter network using very high tolerance components which are inaudible at the crossover frequency. This provides outstanding clarity and coherence with very wide frequency response and high power capacity. This careful attention to detail has led to a loudspeaker with outstanding clarity and coherence along with very wide frequency response and high power capacity. The backbox is designed to mount into a 2x6 wall cavity on 16" centers prior to the drywall installation. The drywall installer simply trims out the backbox opening as with any light fixture or outlet. After painting and finishing the drywall, the **811-WMBB-HP** baffle is reinstalled into the opening to complete the job. The **811-WMBB-HP** is available with its backbox fabricated from Duraflake fire rated particle board by ordering part number **811-WMBB-HP-FR**.



Specifications

Frequency Response	55-20,000 HZ +/- 3 db
Sensitivity	90 db (1w/1m)
Power Capacity, watts	50 RMS; 100 Program
Crossover Frequency	3500 HZ passive
Nominal Impedance	8 ohms
Nominal Dispersion	At least 110 degrees up to 6000 HZ
Low Frequency Transducer	5-1/4" 1-1/4" voice coil
High Frequency Transducer	1" fabric dome
Tuning	8" passive radiator
Enclosure Type	Optimally vented
Enclosure Dimensions	18" h x 8.5" w x 7" d
Enclosure Construction	1/2" particle board w/internal stiffeners
Finish	Black lacquer w/black grille
Electrical Input	Gold plated dual binding post
Weight	14 lbs.
Options	70 volt transformers White lacquer w/white grille

The **KSI Series IV 501-SH** is the smallest loudspeaker in our line of near field loudspeakers. The **501-SH** has been developed to meet the demands of today's digital technology, and its fully shielded transducers allow close placement to video monitors. It's the perfect choice for premium audio visual installations demanding superb sound quality in a compact stand alone cabinet.

The **501-SH** offers smooth midrange and bass response through the use of our 5.25" bass-mid transducer and 8" optimally tuned passive radiator. Our 5.25" transducer faithfully reproduces midrange frequencies, which are so critical for voice and dialogue applications. Coupling this to our 1" fabric dome tweeter gives the **501-SH** outstanding clarity, coherence and wide frequency response with moderate power capacity. Our CNC routing machinery enables us to fabricate the **501-SH** enclosure to the tightest tolerances. High strength to weight ratio and the absence of vibration in the enclosure means you hear only the highest quality audio, not rattles, buzzes or squeaks. All **KSI** transducers are fully sealed to the enclosure with silicone sealant for a complete air tight seal. **KSI** near field loudspeakers are optionally available finished in white lacquer and our wall mount bracket makes wall mounting quick and easy.

501-SH-CH



Specifications

Frequency Response	55-20,000 HZ +/- 3 db
Sensitivity	91 db (1w/1m)
Power Capacity, watts	50 RMS; 100 Program
Crossover Frequency	3500 HZ passive
Nominal Impedance	6 ohms
Nominal Dispersion	At least 110 degrees up to 6000 HZ
Low Frequency Transducer	2x5-1/4" 1-1/4" voice coil
High Frequency Transducer	1" fabric dome
Tuning	Sealed
Enclosure Type	Sealed
Enclosure Dimensions	8.5" h x 18" w x 7" d
Enclosure Construction	1/2" particle board w/internal stiffeners
Finish	Black lacquer w/black grille
Electrical Input	Gold plated dual binding post
Weight	14 lbs.
Options	White lacquer w/white grille

The **KSI Series IV 501-SH-CH** is a center channel loudspeaker designed to meet the demands of today's digital technology, The **501-SH-CH** utilizes fully shielded transducers, allowing close placement to magnetically sensitive video monitors. It's the perfect choice for premium audio visual installations demanding superb sound quality in a compact format cabinet.

The **501-SH-CH** offers smooth midrange and bass response through the use of two 5.25" bass-mid transducers. Our 5.25" transducers faithfully reproduces midrange frequencies, which are so critical for voice and dialogue applications. Coupling this to our 1" fabric dome tweeter gives the **501-SH-CH** outstanding clarity, coherence and wide frequency response. This is critical for center channel applications where voice reproduction is the primary concern. Our CNC routing machinery enables us to fabricate the **501-SH-CH** enclosure to the tightest tolerances. High strength to weight ratio and the absence of vibration in the enclosure means you hear only the highest quality audio, not rattles, buzzes or squeaks. All **KSI** transducers are fully sealed to the enclosure with silicone sealant for a complete air tight seal. This attention to detail greatly improves the overall performance of the **501-SH-CH** making it rival loudspeakers costing much more.



Specifications

Frequency Response	50-20,000 HZ +/- 3 db
Sensitivity	91 db (1w/1m)
Power Capacity, watts	50 RMS; 100 Program
Crossover Frequency	3500 HZ passive
Nominal Impedance	8 ohms
Nominal Dispersion	At least 110 degrees up to 6000 HZ
Low Frequency Transducer	6-1/2" 1-1/2" voice coil
High Frequency Transducer	1" titanium dome
Tuning	8" passive radiator
Enclosure Type	Optimally vented
Enclosure Dimensions	10-1/2" h x 8.5" w x 8" d
Enclosure Construction	1/2" particle board w/internal stiffeners
Finish	Black lacquer w/black grille
Electrical Input	Gold plated dual binding post
Weight	16 lbs.
Options	25 & 70.7 volt transformers White lacquer w/white grille

The **KSI Series IV 601** is a mid-sized loudspeaker in our line of near field loudspeakers. The **601** has been developed to meet the demands of today's digital technology. It's the perfect choice for corporate, government, retail, private residences and any installation demanding superb sound quality in a compact stand alone cabinet.

The **601** offers smooth midrange and bass response through the use of our 6.5" bass-mid transducer and 8" optimally tuned passive radiator. Our 6.5" transducer provides exceptional voice reproduction making the **601** an ideal loudspeaker for video, dialogue and music applications. Coupling this to our 1" pure titanium dome tweeter gives the **601** outstanding clarity, coherence and wide frequency response with moderate power capacity. Our CNC routing machinery enables us to fabricate the **601** enclosure to the tightest tolerances. High strength to weight ratio and the absence of vibration in the enclosure means you hear only the highest quality audio, not rattles, buzzes or squeaks. And all of our transducers are fully sealed to the enclosure with silicone sealant for a complete air tight seal. **KSI** near field loudspeakers are optionally available finished in white lacquer and our wall mount bracket makes wall mounting quick and easy.



Specifications

Frequency Response	48-20,000 HZ +/- 3 db
Sensitivity	92 db (1w/1m)
Power Capacity, watts	50 RMS; 100 Program
Crossover Frequency	3500 HZ passive
Nominal Impedance	8 ohms
Nominal Dispersion	At least 110 degrees up to 6000 HZ
Low Frequency Transducer	8" 1-1/2" voice coil
High Frequency Transducer	1" titanium dome
Tuning	10" passive radiator
Enclosure Type	Optimally vented
Enclosure Dimensions	23" h x 11" w x 10" d
Enclosure Construction	1/2" particle board w/internal stiffeners
Finish	Black lacquer w/black grille
Electrical Input	Gold plated dual binding post
Weight	24 lbs.
Options	70 volt transformers White lacquer w/white grille

The **KSI Series IV 801** is the companion to our popular **8081-CS** in our line of near field loudspeakers. The **801** has been developed to meet the demands of today's digital technology and is the perfect choice for corporate, government, retail, private residences and any installation demanding superb sound quality in a compact stand alone cabinet.

The **801** offers smooth midrange with powerful bass response through the use of our 8" bass-mid transducer and 10" optimally tuned passive radiator. Our 8" transducer provides superb voice and music reproduction for greatly improved intelligibility not found in competitive loudspeakers. Coupling this to our 1" pure titanium dome tweeter gives the **801** outstanding clarity, coherence and wide frequency response with moderate power capacity. Our CNC routing machinery enables us to fabricate the **801** enclosure to the tightest tolerances. High strength to weight ratio and the absence of vibration in the enclosure means you hear only the highest quality audio, not rattles, buzzes or squeaks. And all of our transducers are fully sealed to the enclosure with silicone sealant for a complete air tight seal. **KSI** near field loudspeakers are optionally available finished in white lacquer and our wall mount bracket makes wall mounting quick and easy.



Specifications

Frequency Response	45-20,000 HZ +/- 3 db
Sensitivity	93 db (1w/1m)
Power Capacity, watts	125 RMS; 200 Program
Crossover Frequency	3500 HZ passive
Nominal Impedance	8 ohms
Nominal Dispersion	At least 110 degrees up to 6000 HZ
Low Frequency Transducer	8" cast frame 1-1/2" voice coil
High Frequency Transducer	25mm horn loaded fabric dome
Tuning	10" passive radiator
Enclosure Type	Optimally vented
Enclosure Dimensions	23" h x 11" w x 10" d
Enclosure Construction	1/2" particle board w/internal stiffeners
Finish	Black lacquer w/black grille
Electrical Input	Gold plated dual binding post
Weight	28 lbs.
Options	70 volt transformers White lacquer w/white grille

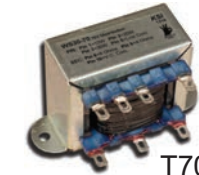
The **KSI Series IV 811-HP** is a companion to our popular **8081-CS-HP** in our line of near field loudspeakers. The **811-HP** has been developed to meet the demands of today's digital technology and is the perfect choice for corporate, government, retail, private residences and any installation demanding superb sound quality in a compact stand alone cabinet.

The **811-HP** offers smooth midrange performance with powerful bass response through the use of our cast frame 8" bass mid transducer and 10" optimally tuned passive radiator. Our 8" transducer features a lightweight mica filled cone providing exceptional voice and music intelligibility. High frequencies are handled by our 25mm horn loaded dome tweeter, providing very smooth upper octave response for an "open" sound quality with wide dynamic range. We have improved our proprietary filter network using very high tolerance components which are inaudible at the crossover frequency. This provides outstanding clarity and coherence with very wide frequency response and high power capacity. This careful attention to detail has led to a loudspeaker with outstanding clarity and coherence along with very wide frequency response and high power capacity. Our CNC routing machinery enables us to fabricate the **811-HP** enclosure to the tightest tolerances. High strength to weight ratio and the absence of vibration in the enclosure means you hear only the highest quality audio, not rattles, buzzes or squeaks. And all of our transducers are fully sealed to the enclosure with silicone sealant for a complete air tight seal. This attention to detail greatly improves the overall performance of the **811-HP** making it rival loudspeakers costing much more.

Notes



T70-60



T70-30



T70-15



T70-8

Specifications

70 Volt standard transformers

T70-8, T70-15, T70-30, T70-60, T70-100

70 Volt extended low frequency transformers

ELT70-8, ELT70-15, ELT70-30, ELT70-60
All extended low frequency transformers are special order only.

Primary Taps in Watts

(2,4,8), (5,10,15), (7.5,15,30), (20,40,60), (25,50,100)

Frequency Response

T70 series/ 50-15,000 HZ +/-3db
ELT70 series/ 30-15,000 HZ +/-1db

Insertion loss

All transformers/ .5db

Secondary Impedance

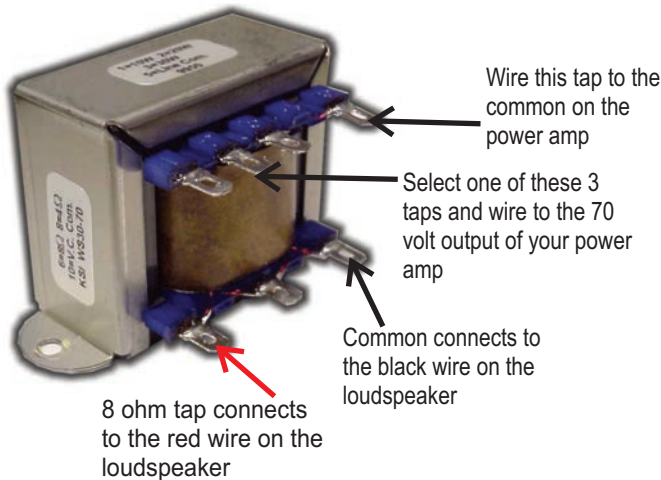
All transformers/ 4 & 8 ohms

KSI audio transformers are designed for use in 70 volt distributed sound systems. Heavy steel cores assure very low distortion and wide frequency response. These specifications are essential, since the transformer should never degrade the high performance found in any loudspeaker. Our transformers are of consistent and high quality, providing you with top audio performance for all of your distributed sound systems. And, they are American Made.

KSI 70 Volt Transformers Feature

- Premium audio performance
- Very wide frequency response
- Very low insertion loss
- Up to 100 watts
- Optional ELT extended low frequency models

Notes



How to select your power amplifier:

Example: (10) KSI 8081-CS loudspeakers with (10) KSI T-70-8 70 volt transformers.

Each loudspeaker will be tapped to receive a minimum of 8 watts at full power. Start by multiplying the number of loudspeakers by the wattage tap that you have selected. This would be 10 loudspeakers X 8 watts per loudspeaker = 80 watts at 70 volts.

We recommend that you add 25% to this figure for added headroom in the system.

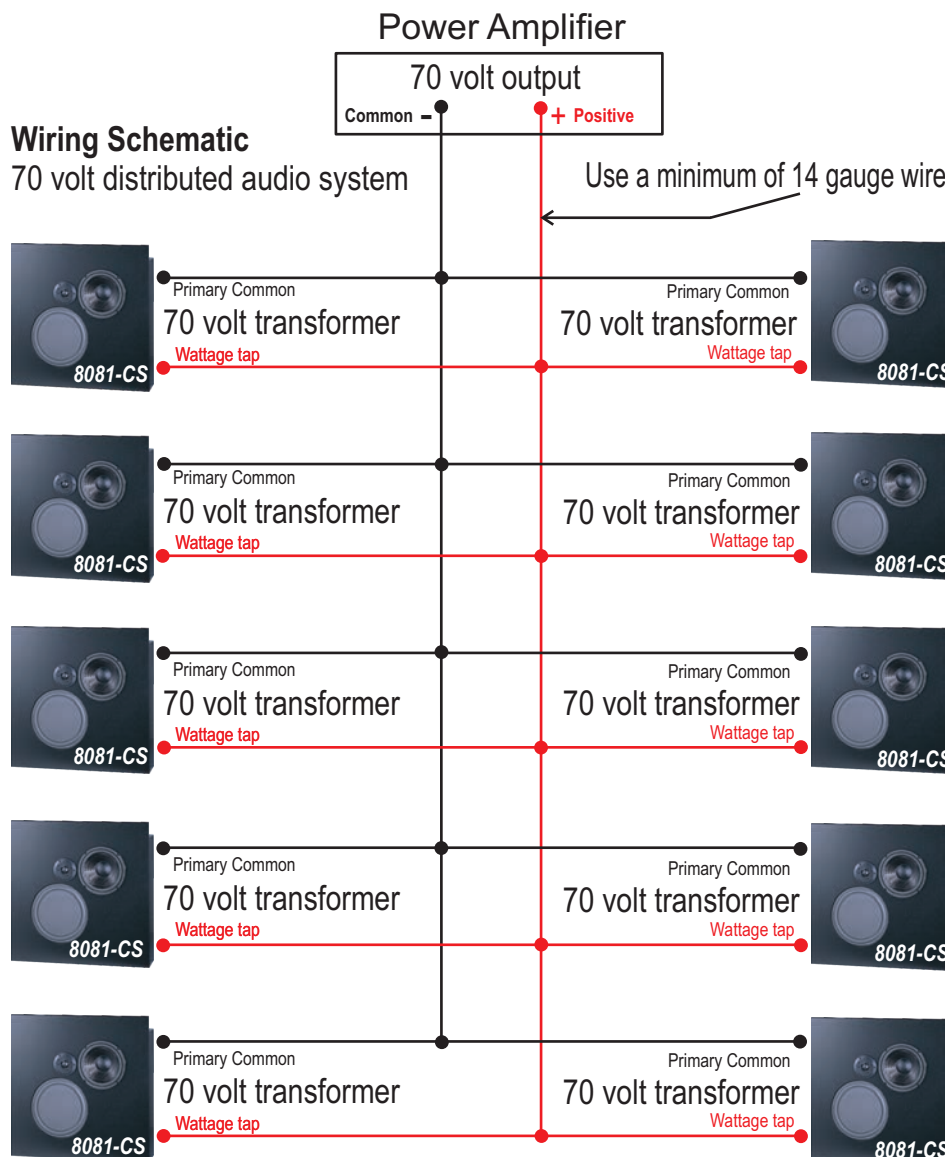
You would then purchase a power amplifier rated at 100 watts @ 70 volts.

How to connect your KSI Loudspeakers to a distributed audio system:

Each KSI transformer has a primary input with one common tap and three wattage taps. These are located on the top of the transformer. The secondary output has one common tap, a tap for eight ohms and a tap for four ohms. These are located on the bottom of the transformer. Connect the KSI loudspeaker black (common) to the transformer (bottom) common terminal. The 8 ohm tap connects to the red on the loudspeaker. This will be pre-wired on the loudspeaker when the transformer is ordered with the speaker. The primaries of all transformers must be connected in parallel from one to the next. (All primary common taps connect together and all primary wattage taps connect together). Run these two wires directly to the power amplifier and connect to the 70 volt outputs on the power amp.

Wiring Schematic

70 volt distributed audio system



Anyone who has experienced KSI Presentation Furniture has a universal opinion - They look great! The reason is simple. All KSI Presentation Furniture is manufactured to such a high standard that you'll have to look long and hard to find anything comparable. Each piece starts by hand selecting only the finest premium grade veneers and solids. Hand selecting assures you that only the choicest specimens are utilized for the highly visible exteriors. The natural character of the wood grain is visually balanced with all design aspects, thereby creating KSI's distinctive expression of design. After careful selection, only skilled craftsmen will create each piece to your exact specifications. And with attention to detail in every step, it's no wonder that our finishes are so smooth and lustrous.

Combining the elements of rock solid construction, timeless designs that work, and the knowledge that comes with 30 years experience, we're sure that KSI will be the last stop you make for your presentation furniture needs.

**KSI Professional
Presentation Furniture offers**

- Premium Quality and Value for 30 years
 - Hundreds of standard designs to choose from
 - Thousands of custom design options
 - 12 standard premium wood finishes
 - Custom Color & Wood Matching to your specifications
 - Professional design consultation - We turn your ideas into reality
 - Rock Solid Construction - 10 year warranty
-
- Lecterns
 - ADA style lecterns and desks
 - Credenzas
 - Presentation Desks
 - Mobile AV Carts
 - Conference Tables
 - Workstations
 - Equipment Racks



*Providing Quality
Solutions Through
Experience*

How to order & specify KSI Presentation Furniture for your next installation

- Phone or email KSI with your design requirements -- We will consult with you to formulate a specification and prepare a unique written price quote that includes an estimated production time.
- When you are ready to order:
 Send us a written purchase order via email or fax
 Reference the quote number on the purchase order, if applicable
 Include the written price quote, if applicable
- Please inform us of any time constraints for your installation at the time you place your order – This will allow us to help you in meeting your deadlines.
- We will send you an acknowledgment of order which will look like this:

	3500 Parkdale Ave. Baltimore, MD, 21211 410-383-2167 FAX 410-383-7573 Email ksi@ksipro.com	<h3 style="text-align: center;">Acknowledgment of Order</h3> <hr/> <p>DATE: _____</p> <p>TO: _____</p> <p>Thank you for your purchase order number received on .</p> <p>ORDER TIME LINE:</p> <table border="1" style="width: 100%; border-collapse: collapse;"> <thead> <tr> <th style="width: 60%;">ACTION</th> <th style="width: 40%;">DEADLINES</th> </tr> </thead> <tbody> <tr> <td>Acknowledgment of Order completion by this date</td> <td></td> </tr> <tr> <td>Wood sample needed at KSI by</td> <td></td> </tr> <tr> <td>Items for cut out(s) received at KSI by</td> <td></td> </tr> <tr> <td>Your order is estimated to ship on or before*</td> <td></td> </tr> </tbody> </table> <p>*Delays providing the required items above will change the production schedule and a new estimated ship date will be provided.</p> <p>Required to complete this Acknowledgment: Deposit = _____ Wood and finish selection _____ Make and model of the following items: _____</p> <p>Items required for cutout to be sent to KSI: _____</p> <p>Contact person for questions regarding details of this order: Name: _____ E-mail: _____</p> <p>Your order will ship as follows and requires your approval by initialing this page and your signature on page 2:</p>	ACTION	DEADLINES	Acknowledgment of Order completion by this date		Wood sample needed at KSI by		Items for cut out(s) received at KSI by		Your order is estimated to ship on or before*	
ACTION	DEADLINES											
Acknowledgment of Order completion by this date												
Wood sample needed at KSI by												
Items for cut out(s) received at KSI by												
Your order is estimated to ship on or before*												
		<p>PLEASE NOTE: KSI does not guarantee the fit of components into specified cutouts unless the item is provided. We will make cutouts based on your or the manufactures dimensional information, and guarantee only that the cut out will match the information provided. All dimensions on drawings should be considered approximate as they may need to be adjusted during manufacture to accommodate your required equipment. If a predetermined dimension <i>must</i> be adhered to, this must be in writing and all engineering changes and alterations must be done in advance. Wood is a natural product and variations occur in veneer texture, grain and color. Finished pieces will vary in tone, sheen, grain, porosity, or character from samples and/or previous orders.</p> <p>Laminate colors, paint, lacquer chips, and stain will vary from batch to batch. No guarantee can be made of an exact match.</p> <p>TERMS OF PAYMENT: _____ METHOD OF SHIPMENT: freight prepaid and added to invoice</p> <p>PLEASE NOTE: ANY CHANGES TO THIS ORDER AFTER SIGN OFF MAY INCUR ADDITIONAL CHARGES AND MAY CHANGE THE DATE OF SHIPMENT.</p> <p style="text-align: center;">THIS ORDER CAN NOT BE CANCELED</p> <p>KSI is manufacturing this order exclusively for you. Your signature is required below indicating that you accept the terms, specifications and conditions as stated in this acknowledgment of order. KSI will process your order as stated upon receipt of this signed acknowledgment of order.</p> <p>This sign-off sheet supercedes and takes precedence over any previous discussions, specifications or purchase orders.</p> <p style="text-align: center;">_____ Signature</p> <p style="text-align: center;">_____ Date</p> <p>Shipping dates are approximate. Please allow adequate lead time when placing your order. KSI will do everything possible to see that your order is shipped by the above estimated date of shipment.</p>										

- KSI will require timely completion and return of the acknowledgment of order within the deadlines provided. We will provide you with a shipping date that will be indicated on the acknowledgment of order.
- Once the acknowledgment of order has been completed and returned the average shipping times for:
 - Essential Line Products is 3 to 4 weeks
 - Premier Line Products is 5 to 6 weeks
 - Custom Products are up 10 weeks

Providing Quality Solutions Through Experience

ESL-32	
Dimensions	32" w x 48" h x 32" d
Features <i>As Shown</i>	Flat charcoal matrix work surface Gooseneck reading lamp Locking keyboard/mouse drawer Locking side pull out drawer Rear locking doors Front locking access panel 11 space rack mount section CPU tower section Ventilation Fan Electrical inlet w/6 outlet power strip Cable management throughout Heavy duty swivel casters
Finish shown	A-1 grade plain sliced red oak with KSI clear natural finish
Options	Premier Line finishes, select à la carte options



ESL Lecterns come standard with our most popular features and are ideal for Educational, Government and Corporate Environments

The ESL-32 is available in any of our premier line finishes, laminates, and custom color matching. You can also specify the type of work surface you require, along with any cutouts for LCD monitors, touch panels interfaces, etc.

ESL-36	
Dimensions	36" w x 48" h x 32" d
Features <i>As Shown</i>	Two step charcoal matrix work surface Gooseneck reading lamp Locking keyboard/mouse drawer Locking side pull out drawer Rear locking pocket doors Front locking access panel 11 space rack mount section CPU tower section Ventilation Fan Electrical inlet w/6 outlet power strip Cable management throughout Heavy duty swivel casters
Finish shown	A-1 grade plain sliced sapele with KSI medium mahogany finish
Options	Premier Line finishes, select à la carte options



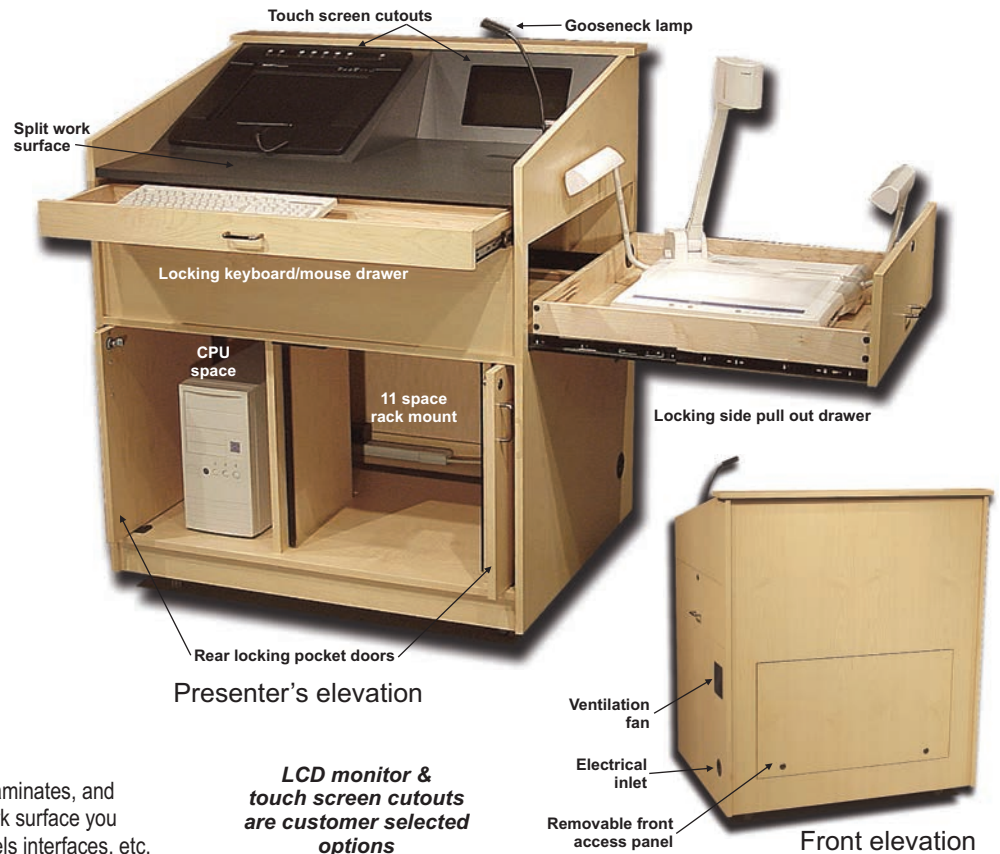
ESL-36

Essential Line Lectern

ESL Lecterns come standard with our most popular features and are ideal for Educational, Government and Corporate Environments

The ESL-36 is available in any of our premier line finishes, laminates, and custom color matching. You can also specify the type of work surface you require, along with any cutouts for LCD monitors, touch panels interfaces, etc.

ESL-40	
Dimensions	40" w x 48" h x 32" d
Features <i>As Shown</i>	Split charcoal matrix work surface Gooseneck reading lamp Locking keyboard/mouse drawer Locking side pull out drawer Rear locking pocket doors Front locking access panel 11 space rack mount section CPU tower section Ventilation Fan Electrical inlet w/6 outlet power strip Cable management throughout Heavy duty swivel casters
Finish shown	A-1 grade plain sliced maple with KSI clear natural finish
Options	Premier Line finishes, select à la carte options



ESL Lecterns come standard with our most popular features and are ideal for Educational, Government and Corporate Environments

The ESL-40 is available in any of our premier line finishes, laminates, and custom color matching. You can also specify the type of work surface you require, along with any cutouts for LCD monitors, touch panels interfaces, etc.

ESL-48	
Dimensions	48" w x 48" h x 32" d
Features <i>As Shown</i>	Two step charcoal matrix work surface Gooseneck reading lamp Locking keyboard/mouse drawer Locking side pull out drawer Rear locking pocket doors Front locking access panel 11 space rack mount section Adjustable shelves CPU tower section Ventilation Fan Electrical inlet w/6 outlet power strip Cable management throughout Heavy duty swivel casters
Finish shown	A-1 grade plain sliced cherry with KSI clear natural finish
Options	Premier Line finishes, select à la carte options



ESL Lecterns come standard with our most popular features and are ideal for Educational, Government and Corporate Environments

The ESL-48 is available in any of our premier line finishes, laminates, and custom color matching. You can also specify the type of work surface you require, along with any cutouts for LCD monitors, touch panels interfaces, etc. The ESL-48 can also be ordered with two (2) 11 space racks in lieu of the CPU and adjustable shelves.

ESL-CR22	
Dimensions	23.25" w x 31.5" h x 22" d
Features As Shown	Single 14 space front rack mount Single 14 space rear rack mount Locking front door w/smoked plexiglass Locking rear door Rear ventilation fan Lower intake ventilation grille Cable management throughout 4 Heavy duty swivel casters Same height as our CR-44, CR-66 and CR-88
Finish shown	A-1 grade plain sliced walnut with KSI medium walnut finish
Options	Premier Line finishes, select à la carte options, extra deep to 32".



Front Elevation

Rear elevation

ESL Credenzas are perfect for Educational, Government and Corporate Environments. You can choose any premier line finish or laminate. The ESL-CR22 is also available in a 32" XD model to house extra depth equipment.

ESL-CR44	
Dimensions	44" w x 31.5" h x 22" d
Features As Shown	Two 14 space front rack mounts Two 14 space rear rack mounts Locking front doors Locking rear doors Rear ventilation fans Lower intake ventilation grilles Cable management throughout Two 6 outlet electrical strips 6 Heavy duty swivel casters
Finish shown	A-1 grade plain sliced red oak with KSI medium oak finish
Options	Premier Line finishes, select à la carte options, extra depth to 32".

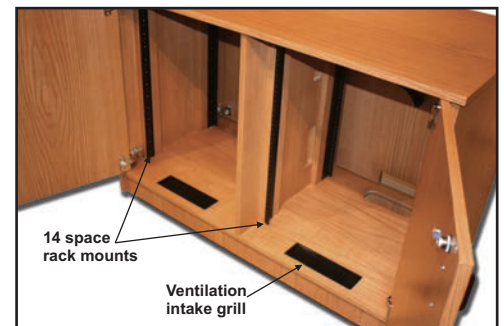


Front Elevation

ESL-CR44
Essential Line Credenza



Rear elevation



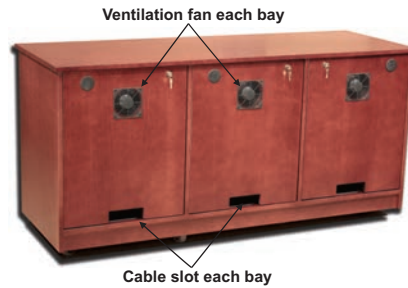
ESL Credenzas are perfect for Educational, Government and Corporate Environments. You can choose any premier line finish or laminate. The ESL-CR44 is also available in a 32" XD model to house extra depth equipment.

ESL-CR66	
Dimensions	66" w x 31.5" h x 22" d
Features <i>As Shown</i>	Three 14 space front rack mounts Three 14 space rear rack mounts Locking front doors Locking rear doors Rear ventilation fans Lower intake ventilation grilles Cable management throughout Three 6 outlet electrical strips 8 Heavy duty swivel casters
Finish shown	A-1 grade plain sliced cherry with KSI dark cherry finish
Options	Premier Line finishes, select à la carte options, extra depth to 32".



Front Elevation

ESL Credenzas are perfect for Educational, Government and Corporate Environments. You can choose any premier line finish or laminate. The ESL-CR66 is also available in a 32" XD model to house extra depth equipment.



Rear elevation



14 space rack mount each bay

Ventilation intake grill each bay

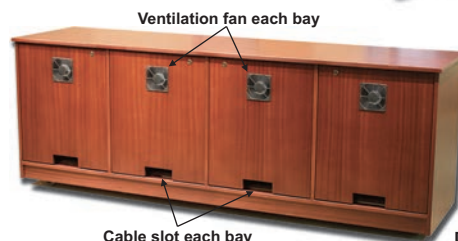
ESL-CR88	
Dimensions	88" w x 31.5" h x 22" d
Features <i>As Shown</i>	Four 14 space front rack mounts Four 14 space rear rack mounts Locking front doors Locking rear doors Rear ventilation fans Lower intake ventilation grilles Cable management throughout Four 6 outlet electrical strips 10 Heavy duty swivel casters
Finish shown	A-1 grade ribbon striped sapele with KSI dark mahogany finish
Options	Premier Line finishes, Select à la carte options, extra depth to 32".



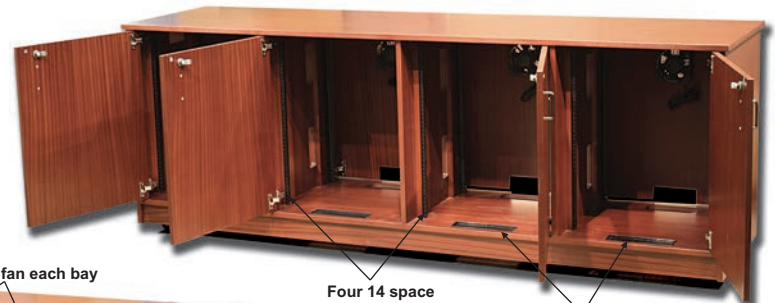
Front Elevation

ESL-CR88
Essential Line Credenza

ESL Credenzas are perfect for Educational, Government and Corporate Environments. You can choose any premier line finish or laminate. The ESL-CR88 is also available in a 32" XD model to house extra depth equipment.



Rear elevation



Four 14 space rack mount bays

Ventilation intake grill each bay

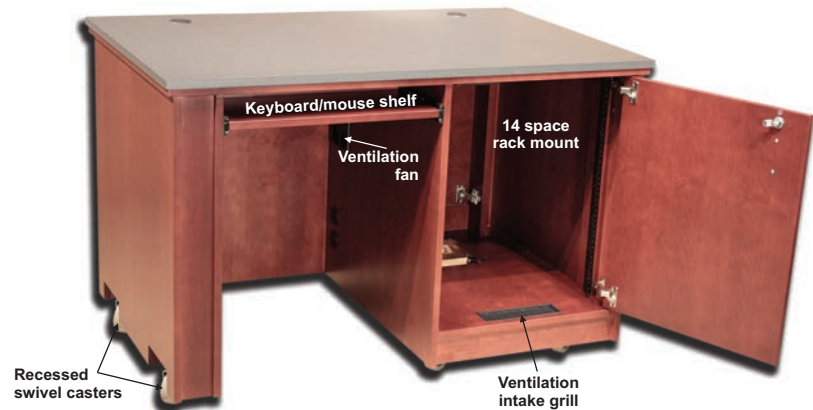
ESL-PD48	
Dimensions	48" w x 31" h x 30" d
Features <i>As Shown</i>	Flat charcoal matrix work surface Pull out keyboard shelf 14 Space rack mount Locking door on presenter's side Front locking access door Ventilation Fan Cable management throughout 6 outlet electrical strip Heavy duty swivel casters
Finish shown	A-1 grade plain sliced cherry with KSI dark cherry finish
Options	Premier Line finishes, select à la carte options



Front Elevation



Front access door



Presenter's elevation

KSI ESL Presentation Desks are the ideal choice for any classroom environment. You can choose any premier line finish or laminate. All desks may be ordered with optional swivel casters.

ESL-PD60	
Dimensions	60" w x 31" h x 30" d
Features <i>As Shown</i>	Flat charcoal matrix work surface Pull out keyboard/mouse shelf 14 Space rack mount Locking door on presenter's side Front locking access door Ventilation Fan Cable management throughout 6 outlet electrical strip
Finish shown	A-1 grade plain sliced cherry with KSI clear natural finish
Options	Premier Line finishes, select à la carte options

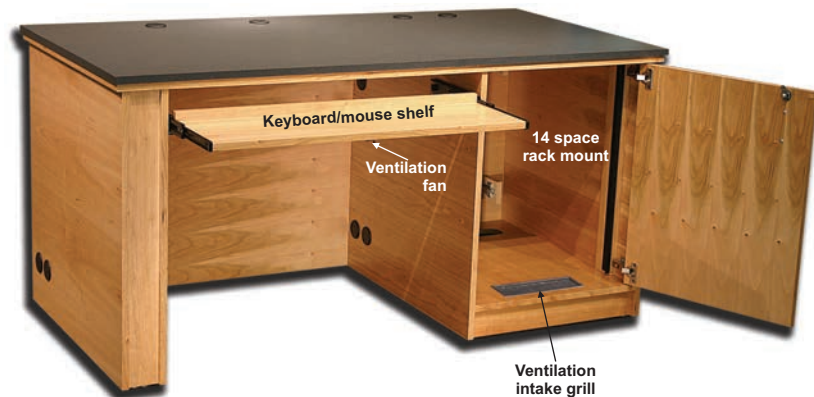


Front Elevation

ESL-PD60
Essential Line Presentation Desk



Front access door



Presenter's elevation

KSI ESL Presentation Desks are the ideal choice for any classroom environment. You can choose any premier line finish or laminate. All desks may be ordered with optional swivel casters.

ESL-PD60-4	
Dimensions	60" w x 40" h x 30" d
Features <i>As Shown</i>	Three step charcoal matrix work surface Pull out keyboard/mouse shelf 14 Space rack mount Locking door on presenter's side Front locking access door Ventilation Fan Cable management throughout 6 outlet electrical strip
Finish shown	A-1 grade plain sliced maple with KSI clear natural finish
Options	Premier Line finishes, select à la carte options



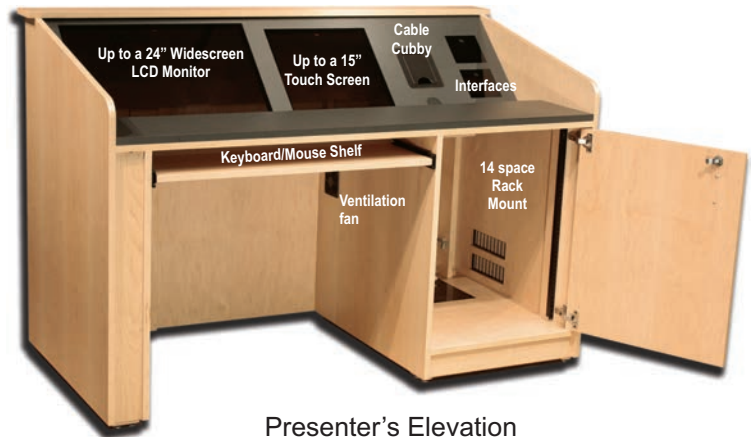
Ventilation intake grills

Front access door

Front elevation



Three step work surface



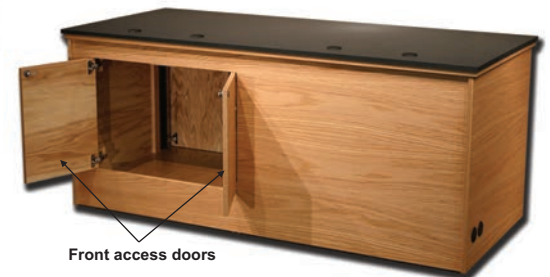
Presenter's Elevation

KSI ESL Presentation Desks are the ideal choice for any classroom environment. You can choose any premier line finish or laminate. All desks may be ordered with optional swivel casters.

ESL-PD72	
Dimensions	72" w x 31" h x 30" d
Features <i>As Shown</i>	Flat charcoal matrix work surface Pull out keyboard/mouse shelf 14 Space rack mount Locking door on presenter's side CPU tower section with locking door Front locking access doors Ventilation Fan Cable management throughout 6 outlet electrical strip
Finish shown	A-1 grade plain sliced red oak with KSI clear natural finish
Options	Premier Line finishes, select à la carte options

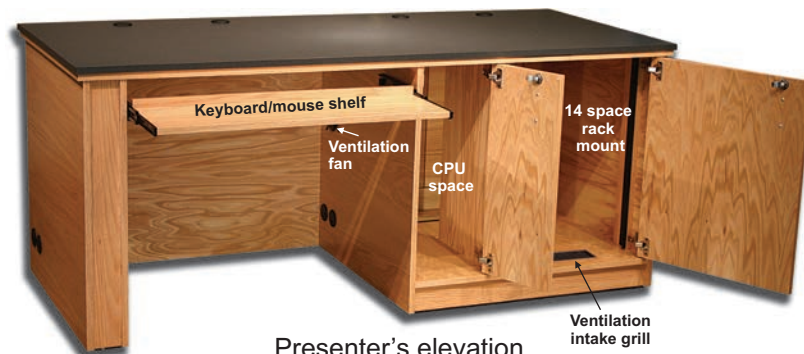


Front Elevation



Front access doors

ESL-PD72
Essential Line Presentation Desk



Presenter's elevation

KSI ESL Presentation Desks are the ideal choice for any classroom environment. You can choose any premier line finish or laminate. All desks may be ordered with optional swivel casters.

ESL-PR405	
Dimensions	32" w x 23.5" d x 41" h
Features <i>As Shown</i>	Fixed height keyboard mouse drawer Rear locking hinged doors Front locking access panel 17 space rack mount Cable management 6 outlet electrical strip Electrical inlet Heavy duty recessed swivel casters
Finish shown	A-1 grade plain sliced red oak with KSI clear natural finish
Options	Premier Line finishes, select à la carte options



Presenter's Elevation



Keyboard/mouse drawer



Presenter's Elevation



Front removable access panel

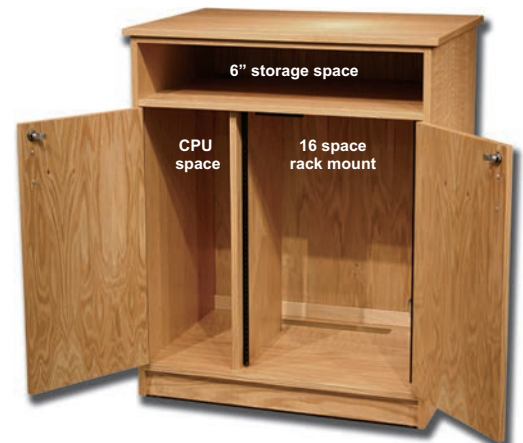
ESL Presenter's Carts are ideal for mobile presentations where a compact, easy to move system is required. You can choose any premier line finish or laminate.

ESL-PR405B	
Dimensions	32" w x 23.5" d x 41" h
Features <i>As Shown</i>	6" upper storage section Rear locking hinged doors Front locking access panel 16 space rack mount CPU tower space Cable management 6 outlet electrical strip Heavy duty recessed swivel casters
Finish shown	A-1 grade plain sliced red oak with KSI clear natural finish
Options	Premier Line finishes, select à la carte options



Presenter's Elevation

ESL-PR405B
Essential Line Presenter's Cart



Presenter's Elevation



Front removable access panel

ESL Presenter's Carts are ideal for mobile presentations where a compact, easy to move system is required. You can choose any premier line finish or laminate.

ESL-PR405C	
Dimensions	32" w x 23.5" d x 41" h, 72" w with shelves
Features <i>As Shown</i>	Black matrix work surface Fixed height keyboard mouse drawer Dual flip up/down side shelves Rear locking hinged doors Front locking access panel 17 space rack mount CPU space Cable management 6 outlet electrical strip Electrical inlet Heavy duty recessed swivel casters
Finish shown	A-1 grade plain sliced cherry with KSI burnt cherry finish
Options	Premier Line finishes, select à la carte options



Front locking access panel
Front elevation



Touch screen turret & work surface cutouts



Presenter's elevation
Flip up/down shelves



Presenter's elevation

ESL Presenter's Carts are ideal for mobile presentations where a compact, easy to move system is required. You can choose any premier line finish or laminate.

ESL Equipment Racks	
Dimensions	23" w x [No. of rack spaces X 1.75]+7" h x 22"d
Features <i>As Shown</i>	Front rack rail Removable locking front door Removable locking vented rear door Bottom vent Cable management and cutouts 6 outlet electrical strip Heavy duty swivel casters
Finish	Any KSI Premier line finish
Options	Ventilation Fans, Select à la carte options

ESL-R6 thru R40

Essential Line Equipment Racks



ESL-R40 Front Elevation
with inset smoked plexiglass door
Shown in textured black lacquer



ESL-R12 Front Elevation
Shown in plain sliced red oak



ESL-R12 Rear Elevation
Shown in plain sliced red oak



ESL-R18 Front Elevation with inset smoked plexiglass door
Shown in plain sliced cherry with KSI burnt cherry finish



ESL-R18 Rear Elevation
Shown in plain sliced cherry with
KSI burnt cherry finish

ESL Equipment Racks are designed for housing small or large amounts of electronic equipment. Sizes from 6 to 40 spaces are offered. We recommend all heavy equipment be placed at the bottom of the rack for stability. You can choose any premier line finish or laminate.

L-100 Series Statesman Lectern

Standard Dimensions	L-100-25	25" w x 48" h x 23" d
	L-100-32	32" w x 48" h x 23" d
	L-100-32/32	32" w x 48" h x 32" d
	L-100-40	40" w x 48" h x 23" d
	L-100-40/32	40" w x 48" h x 32" d
	L-100-48	48" w x 48" h x 23" d
	L-100-48/32	48" w x 48" h x 32" d
	L-100-60	60" w x 48" h x 23" d
	L-100-60/32	60" w x 48" h x 32" d

Standard Features	Flat or single sloped work surface
	Gooseneck reading lamp
	Electrical inlet w/ 6 outlet strip
	Black recessed base or swivel casters

Finish shown	A-1 grade plain sliced mahogany with KSI dark mahogany finish
---------------------	---

Options	Premier Line finishes, à la carte options
----------------	---

The Statesman Lectern is available in any of our premier line finishes, laminates, and custom color matching. The above sizes are our standard sizes. We can change any dimension to suite your personal requirements. You can select the type of work surface, cutouts for LCD monitors, touch panels, interfaces, rack mounts, drawers, or any of our other premier line options.

Stand behind the Statesman Lectern, and the room is yours. Clean lines with premium veneers and solid woods will enhance the decor in any room.



Front Elevation



Presenter's Elevation

L-200 Series Congressional Lectern

Standard Dimensions	L-200-25	25" w x 48" h x 23" d
	L-200-32	32" w x 48" h x 23" d
	L-200-32/32	32" w x 48" h x 32" d
	L-200-40	40" w x 48" h x 23" d
	L-200-40/32	40" w x 48" h x 32" d
	L-200-48	48" w x 48" h x 23" d
	L-200-48/32	48" w x 48" h x 32" d
	L-200-60	60" w x 48" h x 23" d
	L-200-60/32	60" w x 48" h x 32" d

Standard Features	Flat or single sloped work surface
	Gooseneck reading lamp
	Electrical inlet w/ 6 outlet strip
	Black recessed base or swivel casters

Finish shown	A-1 grade plain sliced walnut with KSI dark walnut finish
---------------------	---

Options	Premier Line finishes, à la carte options
----------------	---

The Congressional Lectern is available in any of our premier line finishes, laminates, and custom color matching. The above sizes are our standard sizes. We can change any dimension to suite your personal requirements. You can select the type of work surface, cutouts for LCD monitors, touch panels, interfaces, rack mounts, drawers, or any of our other premier line options.

The Congressional Lectern, a bold statement of style and design. Smooth contours with solid woods and veneers are sure to blend harmoniously with a wide range of environments.



Front Elevation



Presenter's Elevation

The Congressional Lectern
Premier Line Lectern

L-400 Series Executive Lectern

Standard Dimensions	L-400-25	25" w x 48" h x 23" d
	L-400-32	32" w x 48" h x 23" d
	L-400-32/32	32" w x 48" h x 32" d
	L-400-40	40" w x 48" h x 23" d
	L-400-40/32	40" w x 48" h x 32" d
	L-400-48	48" w x 48" h x 23" d
	L-400-48/32	48" w x 48" h x 32" d
	L-400-60	60" w x 48" h x 23" d
	L-400-60/32	60" w x 48" h x 32" d

Standard Features Flat or single sloped work surface
Gooseneck reading lamp
Electrical inlet w/ 6 outlet strip
Black recessed base or swivel casters

Finish shown A-1 grade plain sliced cherry with KSI dark cherry finish

Options Premier Line finishes, à la carte options

The Executive Lectern is available in any of our premier line finishes, laminates, and custom color matching. The above sizes are our standard sizes. We can change any dimension to suite your personal requirements. You can select the type of work surface, cutouts for LCD monitors, touch panels, interfaces, rack mounts, drawers, or any of our other premier line options.

The Executive Lectern, a traditional design for the corporate environment of today and the future. Fluted and angled front corners with solid woods and veneers create a statement of distinction and grandeur.



Front Elevation



Presenter's Elevation

L-500 Series Delegate Lectern

Standard Dimensions	L-500-25	25" w x 48" h x 23" d
	L-500-32	32" w x 48" h x 23" d
	L-500-32/32	32" w x 48" h x 32" d
	L-500-40	40" w x 48" h x 23" d
	L-500-40/32	40" w x 48" h x 32" d
	L-500-48	48" w x 48" h x 23" d
	L-500-48/32	48" w x 48" h x 32" d
	L-500-60	60" w x 48" h x 23" d
	L-500-60/32	60" w x 48" h x 32" d

Standard Features Flat or single sloped work surface
Gooseneck reading lamp
Electrical inlet w/ 6 outlet strip
Black recessed base or swivel casters

Finish shown A-1 grade plain sliced walnut with KSI dark walnut finish

Options Premier Line finishes, à la carte options

The Delegate Lectern is available in any of our premier line finishes, laminates, and custom color matching. The above sizes are our standard sizes. We can change any dimension to suite your personal requirements. You can select the type of work surface, cutouts for LCD monitors, touch panels, interfaces, rack mounts, drawers, or any of our other premier line options.

The Delegate Lectern, a sleek design for intense negotiations and presentations. Solid woods and veneers are brought to life with KSI's superior cabinetmaking skills.



Front Elevation



Presenter's Elevation

The Delegate Lectern Premier Line Lectern

L-600 Series Pedestal Lecterns

Standard Dimensions	L-600-25 25" w x 46" h x 23" d L-600-32 32" w x 46" h x 23" d
Standard Features	Black matrix laminate work surface Flat or sloped work surface Halogen reading lamp Cable management Electrical inlet w/6 outlet strip
Finishes Shown	L-600-25 Burnt cherry L-600-32 Honey steamed beech L-600-25 w/door Clear natural maple
Options	Premier line finishes, Select à la carte options



L-600-25



L-600-32



L-600-25
w/optional shelves
and rear door



KSI Pedestal Lecterns are architecturally simple, clean and functional.

They are available in any of our premier line finishes, laminates, and custom color matching. The above sizes are our standard sizes. We can change any dimension to suite your personal requirements. You can select work surface cutouts for touch panels and interfaces. Premier line options are limited due to the small footprint of this design.

Table Top Lecterns

Standard Dimensions	LT-100-25 25" w x 15.5" h x 23" d LT-200-25 25" w x 15.5" h x 23" d LT-400-25 25" w x 15.5" h x 23" d LT-500-25 25" w x 15.5" h x 23" d
Standard Features	Flat or single sloped work surface Gooseneck reading lamp Electrical inlet w/ 6 outlet strip
Finish shown	LT-500-25 white maple LT-200-25 white maple w/cherry toner
Options	Premier Line finishes, Select à la carte options

Table Top Lecterns
Premier Line Lecterns



LT-500-25 Delegate Table Top Lectern



KSI Table Top Lecterns are great for portable applications in schools, corporations and government.

All models are available in our Statesman, Congressional, Executive, and Delegate styles, in any of our premier line finishes, laminates, and custom color matching. The above sizes are our standard sizes, and may be modified to suite your personal requirements. You can also select limited premier line options.



LT-200-25 Congressional Table Top Lectern



KSI ADA style lecterns are a great choice when ADA requirements are needed. Twelve inches of travel with electric height adjustment make it easy for any person to get **"JUST THE RIGHT HEIGHT"**. The cantilevered top section of the Ambassador or the u-shape of the Statesman, Congressional, Executive and Delegate allows anyone in a wheelchair to pull right up to the generous work surface.



Statesman ADA style
48" w x 30" d x 36" to 48" h
Electrically height adjustable
Single slope charcoal matrix ws
Heavy duty locking casters
KSI ribbon striped sapele w/dark mahogany finish



Congressional ADA style
48" w x 30" d x 36" to 48" h
Electrically height adjustable
Single slope charcoal matrix ws
Heavy duty locking casters
KSI cherry with clear natural finish



Ambassador ADA style
41.5" w x 30" d x 36" to 48" h
Electrically height adjustable
Single slope charcoal matrix ws
Aluminum plate w/black powder coat
KSI cherry with burnt cherry finish



Delegate ADA style
48" w x 30" d x 36" to 48" h
Electrically height adjustable
Single slope charcoal matrix ws
Side flip up shelf, heavy duty locking casters
KSI maple with clear natural finish



KSI ADA Style Lecterns are available in any of our premier line finishes, laminates, and custom color matching. Premier line options are limited due to wheelchair access. Please contact us for assistance in designing your next project.



Clear Natural Maple



Clear Natural Red Oak



Medium Red Oak



Dark Red Oak



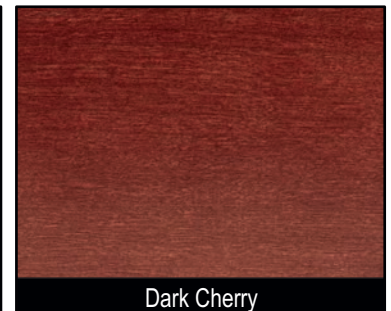
Clear Natural Cherry



Medium Cherry



Burnt Cherry



Dark Cherry



Clear Natural Mahogany



Dark Mahogany



Clear Natural Walnut



Red Walnut



Dark Walnut

All KSI wood finishes are formulated and mixed exclusively by us to enhance the natural beauty of each individual wood specie. Wood samples are prepared on carefully selected A-1 veneers and photographed using the latest digital photo processing technology. Since wood is a natural product, variations will naturally occur in veneer, texture, grain and color of each piece of wood. Finished pieces will vary in tone, sheen, grain, porosity, or character from the sample images shown on this page. Your color monitor and/or printer may also affect the color balance of these images. Due to these variations, no guarantee can be made of an exact match.

For a better representation of the color and wood you have chosen, KSI will supply you with physical wood samples upon request.

We also offer the option of custom coloring matching of all wood species to your existing environment. KSI requires a physical wood sample for this option.



KSI Pedestal 5
Finished in Formica Brushed Aluminum

KSI Presentation Furniture may be ordered finished in high pressure laminates. Hundreds of choices are available including those from the manufactures shown here.

You can select solid color, patterns or real metals either singularly or in combination. We are here to assist you in making your selection and will assure compatibility of materials and provide a price and delivery quote.



KSI Congressional Lectern
Finished in Formica Almond Fusion and Black laminate



KSI Congressional Lectern
Finished in Wilsonart Bronze and Formica Horizontal Ribbed Aluminum



KSI ESL-32 Lectern
Finished in Formica Chili Fiber and Wilsonart Graphite Nebula



KSI work surfaces come standard with Wilsonart Graphite Nebula

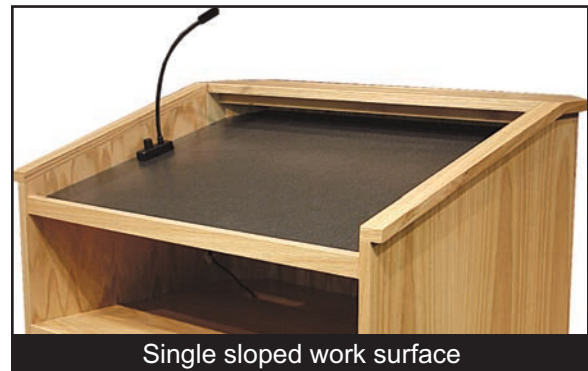
KSI offers a full selection of options allowing you to customize your Premier Line Presentation Furniture exactly the way you want. We are here to assist you in configuring your furniture, making your job as easy as possible.

Choose your options from

- Work surfaces
- LCD and touch screen mounting
- Electrical management
- Keyboard/mouse drawers and shelves
- Drawers for visual presenters
- Storage for CPU's and other devices
- Doors and access panels for maintenance
- Rack mounting
- Security panels
- Electrical height adjustment
- Caster options for mobile applications
- *Please call us for your special and custom requirements*



Flat work surface



Single sloped work surface



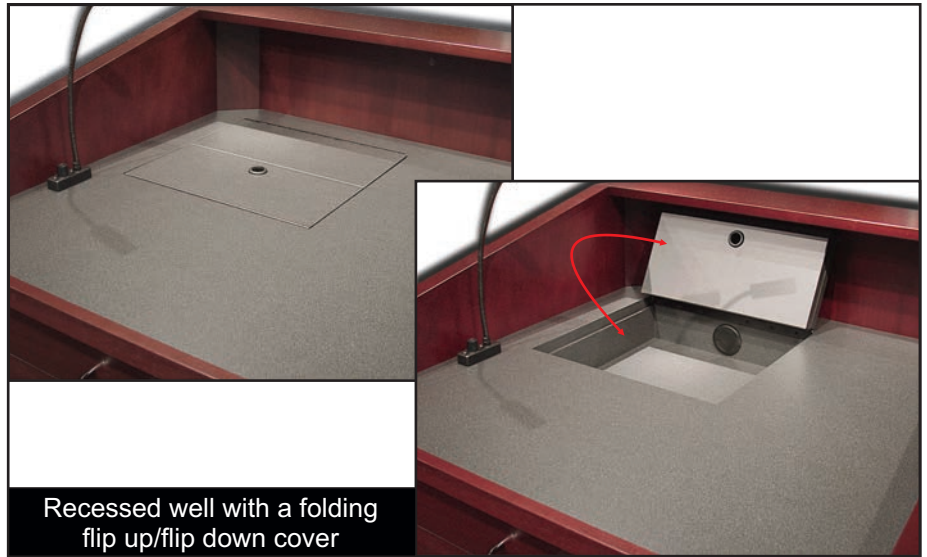
Two step work surface with LCD and touch screen mounting



Split work surface with touch screen and interface mounting



Three step work surface with LCD and interface mounting



Recessed well with a folding flip up/flip down cover



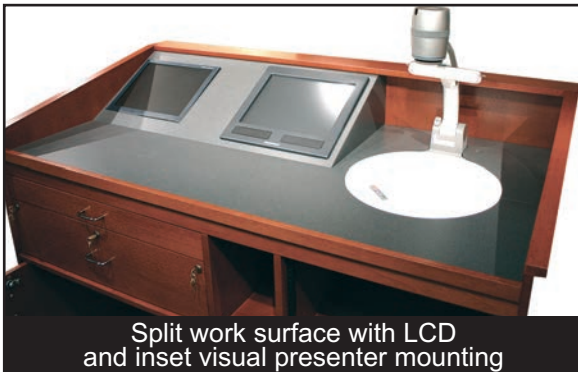
Four step work surface with LCD and touch screen mounting



Two step work surface with a flip up/ flip down locking security panel



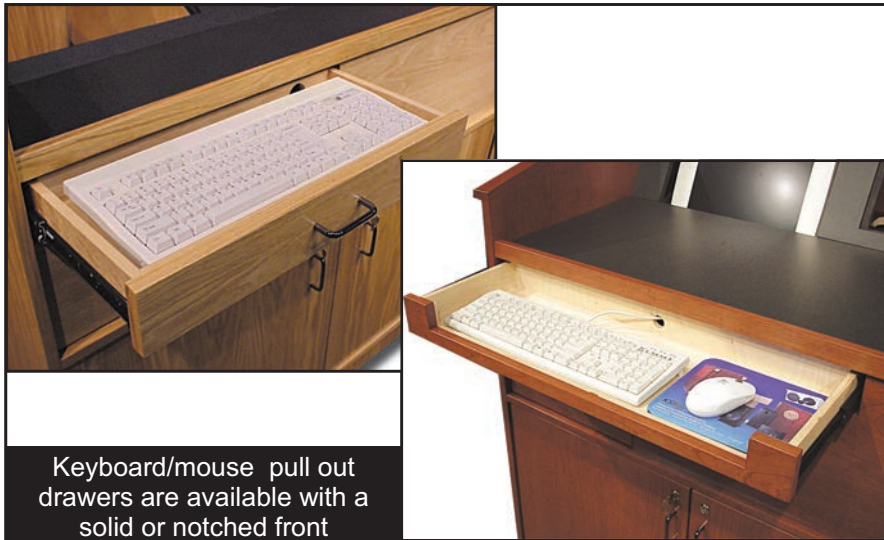
Turret for interface mounting



Split work surface with LCD and inset visual presenter mounting



Flat work surface with fully removable locking security cover



Keyboard/mouse pull out drawers are available with a solid or notched front



Pull out keyboard/mouse shelf



Medium rear pull out storage drawer



Keyboard/mouse pull out shelf with a flip down locking security panel



Side pull out shelf with a flip down side door panel



Flip up/flip down side shelf



Side pull out shelf



Side pull visual presenter drawer



Full removable front panel for complete equipment and device access



Recessed interface panel with a hinged door and push latch



Removable bottom panel with cable notch for floor access



Removable front access panel for the lower section



Removable locking side access panel



Pull out rack mount in the lower section



Fixed rack mount in lower section - 11 spaces standard



Adjustable shelves - size may vary based on other options



CPU pull out shelf - standard size 9.5" w x 18" h



Large rear pull out storage drawer



Large rear pull out shelf for printers and other devices



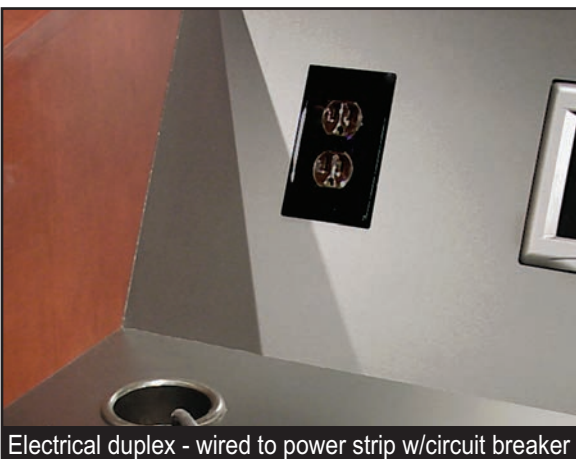
Articulating arm for an LCD monitor



Rear locking swivel casters - keep everything in place



Electrical inlet for quick connect and disconnect of power



Electrical duplex - wired to power strip w/circuit breaker



Ventilation fans with recessed grilles with KSI exclusive quiet isolation mount

Optional thermal switch keeps equipment cool



Recessed 3" cable well - keeps wires in check



Electrical pop-up LCD monitor mount



Countdown clock timer

KSI offers electric height adjustment on almost any model. Our mechanism is sturdy and strong, and the precise fit between the internal structure and the outside shell assure smooth operation. This option will consume space in the furniture so additional space for equipment may be limited. Please call us so we may accommodate your height adjustment requirements.



L-600-32-EL Pedestal Lectern



L-300-40 Ambassador Lectern



L-100-32/32-EL Statesman Lectern 12



L-100-32/32-EL Statesman Lectern

KSI offers you the option of having your logo identity added to any lectern or other piece of furniture. We offer CNC engraving, digital printing directly onto the surface, raised plastic and metal, or any other material you desire. All you need to do is supply us with a clean EPS, DWG or DXF file. We will faithfully reproduce your identity on the piece of your choosing.



BNSF Railway
CNC machined from solid brass



Defense Intelligence
Digitally printed on maple



USA Today
CNC machined black corian



Booz Allen Hamilton
Raised black sintra



IRS
Digitally printed honey maple



Santa Monica College
CNC cut w/black lacquer fill



Pilgrim's Pride
CNC machined w/lacquer fill



Hayfield College
Digitally printed inlay plexiglass



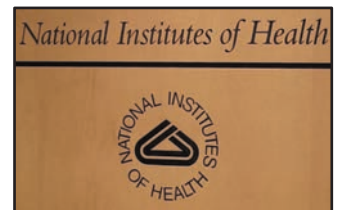
Fed Ex
CNC cut w/polane fill



Marine Corps
Digitally printed aluminum



Towson University
Raised white and yellow sintra



NIH
CNC machined w/black lacquer fill

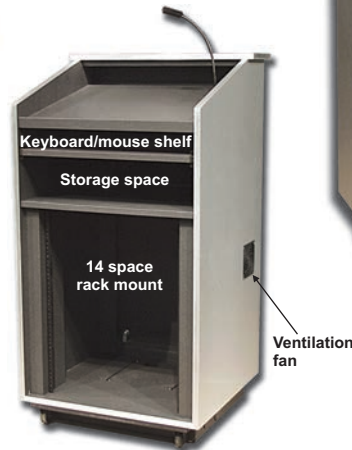
Aluminum 1	
Dimensions	25" w x 48" h x 23.5" d
Features <i>As Shown</i>	Single slope charcoal matrix work surface Pull out keyboard shelf Gooseneck reading light 14 space rack mount Full front removable access panel Ventilation fan Removable bottom access panel Cable management Electrical inlet w/6 outlet strip Standard base w/tilt back casters
Finish shown	Genuine brushed aluminum exterior, black matrix interior
Options	Premier Line finishes, à la carte options



Front elevation corner detail



Full removable front access



Presenter's elevation



Front Elevation

Aluminum 3	
Dimensions	40" w x 36" h x 30" d to 40" w x 44" h x 30" d
Features <i>As Shown</i>	Single sloped black matrix work surface Gooseneck reading lamp Electrically height adjustable Cantilever top section Storage space below work surface Electrical inlet Cable management throughout 3/8" aircraft aluminum bottom plate
Finish shown	Genuine Brushed Aluminum
Options	Premier Line finishes, select à la carte options



Presenter's elevation



Front elevation

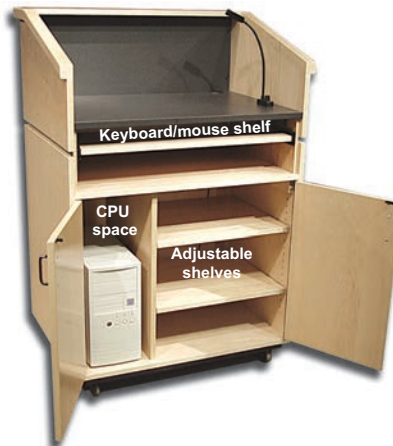
➤ This model features
Electrical Height Adjustment



Front elevation with up to 8" of height adjustment

Birdseye	
Dimensions	32" w x 48" h x 23.5" d
Features <i>As Shown</i>	Charcoal matrix work surface Gooseneck reading lamp Pull out keyboard/mouse shelf Rear locking door, presenter's side Adjustable shelves CPU tower space Cable management throughout Electrical inlet 6 outlet electrical strip Recessed black base
Finish shown	A-1 grade plain sliced maple & heavy birdseye maple w/KSI clear natural finish
Options	Premier Line finishes, à la carte options

This lectern comes alive with birdseye and plain sliced maple veneers. A deep reveal accents the two differing woods. Solid maple nosing on the top provides a smooth look and feel.



Presenter's elevation



Front elevation

Congressional 3	
Dimensions	32" w x 48" h x 32" d
Features <i>As Shown</i>	Single sloped black matrix work surface Gooseneck reading lamp Fixed middle storage shelf Lower open storage section Removable bottom access panel Cable management throughout 6 outlet electrical strip Heavy duty swivel casters
Finish shown	Dark gray laminate, horizontal ribbed aluminum front panel
Options	Premier Line finishes, à la carte options

Congressional 3
Premier Line Lectern



Presenter's elevation



Front elevation



Front elevation detail showing horizontal ribbed aluminum



Congressional 7	
Dimensions	32" w x 48" h x 32" d
Features <i>As Shown</i>	Two step black matrix work surface Gooseneck reading lamp LCD and touch screen cutouts Keyboard/mouse drawer Adjustable shelf CPU tower space Ventilation Fan Removable bottom access panel Electrical inlet Cable management throughout 6 outlet electrical strip Recessed base
Finish shown	A-1 grade plain sliced maple with KSI custom color finish
Options	Premier Line finishes, à la carte options

KSI's expertise allows us to meet the demands and requirements for the most discerning clients. Our precision machining allows us to add a client identity logo which further personalizes the Congressional Lectern for their private space.

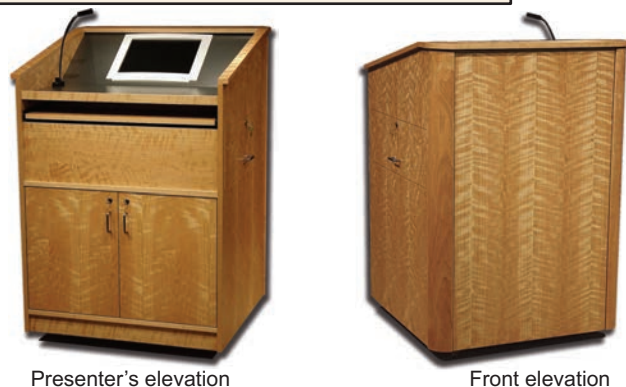


Presenter's elevation

Front elevation shown with optional client logo identity

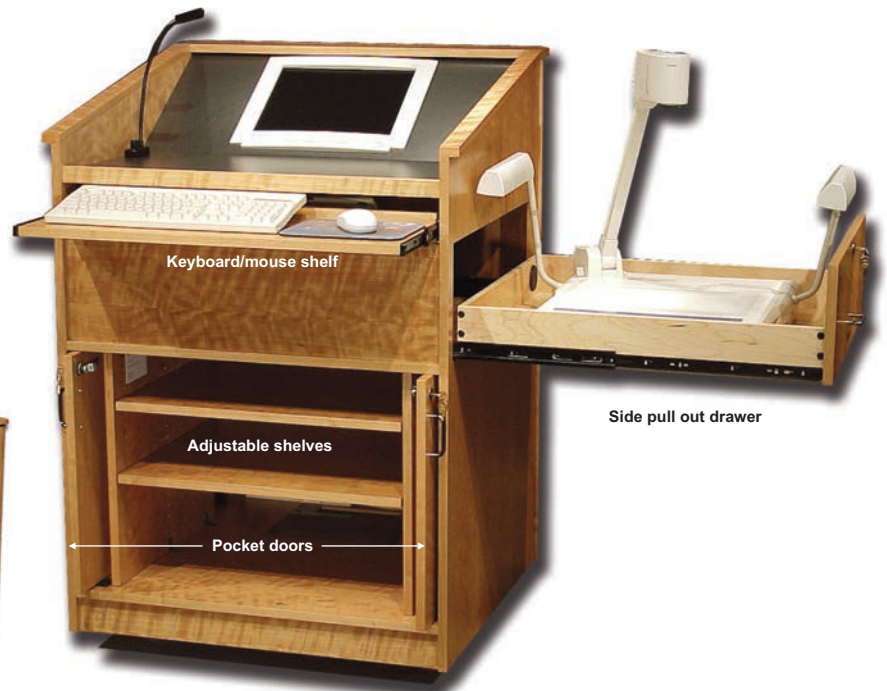
Congressional 14	
Dimensions	32" w x 48" h x 32" d
Features <i>As Shown</i>	Two step charcoal matrix work surface Gooseneck reading lamp LCD monitor mount Pull out keyboard shelf Locking side pull out drawer Rear locking pocket doors Adjustable shelves Removable bottom access panel Cable management throughout 6 outlet electrical strip Heavy duty swivel casters
Finish shown	A-1 grade rift sawn cherry with KSI clear natural finish
Options	Premier Line finishes, à la carte options

Congressional 14
Premier Line Lectern



Presenter's elevation

Front elevation



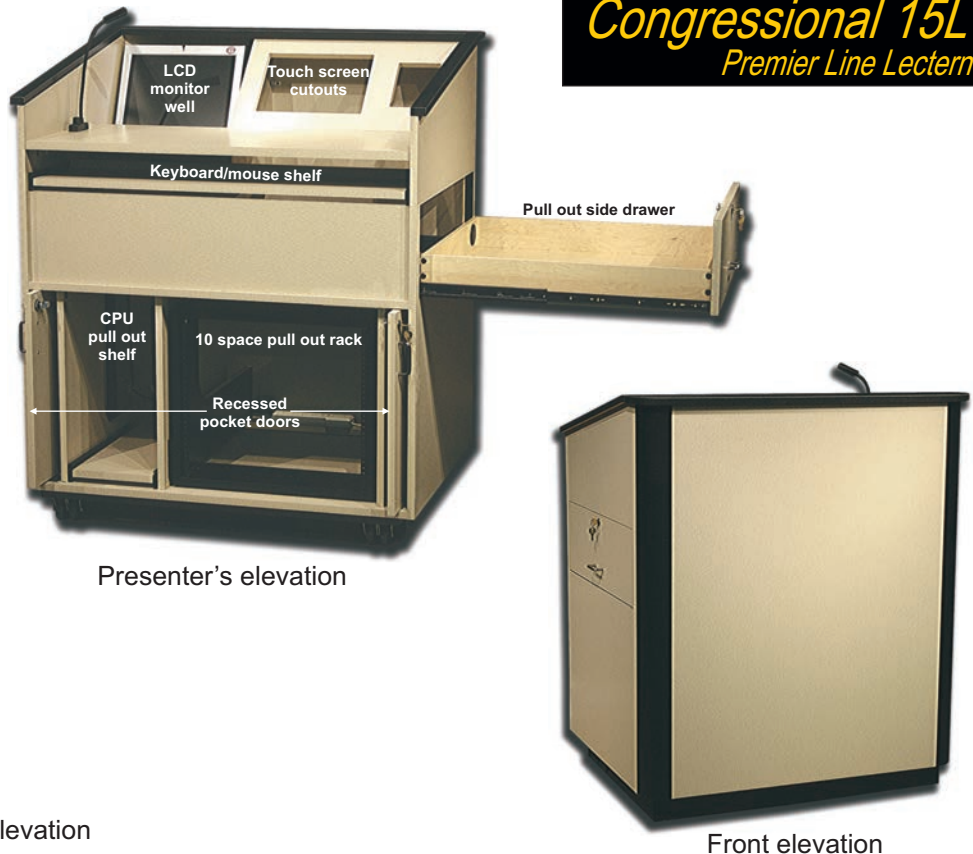
Presenter's elevation

Side pull out drawer

Congressional 4	
Dimensions	40" w x 48" h x 32" d
Features <i>As Shown</i>	Two step black matrix work surface LCD monitor well Gooseneck reading light Pull out keyboard shelf Side pull out drawer Rear locking hinged doors Front locking access panel CPU tower space Cable management throughout 6 outlet electrical strip Rear pull out platform riser
Finish shown	A-1 grade plain sliced red oak with KSI clear natural finish
Options	Premier Line finishes, à la carte options



Congressional 15L	
Dimensions	40" w x 48" h x 32" d
Features <i>As Shown</i>	Two step fusion almond work surface LCD monitor well Gooseneck reading lamp Keyboard/mouse shelf Locking pull out side drawer Rear locking pocket doors 10 space pull out rack mount Pull out CPU tower shelf Electrical inlet Cable management throughout 6 outlet electrical strip Recessed base
Finish shown	Fusion almond and black laminate
Options	Premier Line finishes, à la carte options



Congressional 15L
Premier Line Lectern

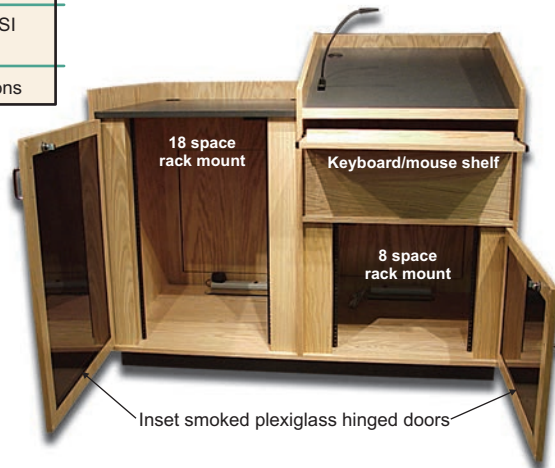
Delegate 5	
Dimensions	56" w x 46" h x 30" d
Features <i>As Shown</i>	Flat black matrix work surface, left Single sloped work surface, right Gooseneck reading lamp Pull out keyboard/mouse shelf Locking pull out side drawer Rear locking smoked plexiglass doors Front locking access panels 8 space rack mount section, right 18 space rack mount section, left Electrical inlet w/6 outlet electrical strip Cable management throughout Recessed base
Finish shown	A-1 grade plain sliced red oak with KSI clear natural finish
Options	Premier Line finishes, à la carte options



Side pull out drawer for a visual presenter



Front elevation



18 space rack mount
Keyboard/mouse shelf
8 space rack mount
Inset smoked plexiglass hinged doors



Presenter's elevation

➤ Great for educational and instructional environments

Delegate 10	
Dimensions	40" w x 48" h x 32" d
Features <i>As Shown</i>	Two step black matrix work surface Reversed top grain above reveal LCD monitor well Gooseneck reading lamp Locking keyboard/mouse drawer Dual rear storage drawers Rear locking pocket doors Front locking access panel 11 space rack mount CPU tower space Ventilation Fan Electrical inlet w/6 outlet electrical strip Cable management throughout Black recessed base
Finish shown	A-1 grade plain sliced red oak with KSI clear natural finish
Options	Premier Line finishes, à la carte options



Front elevation

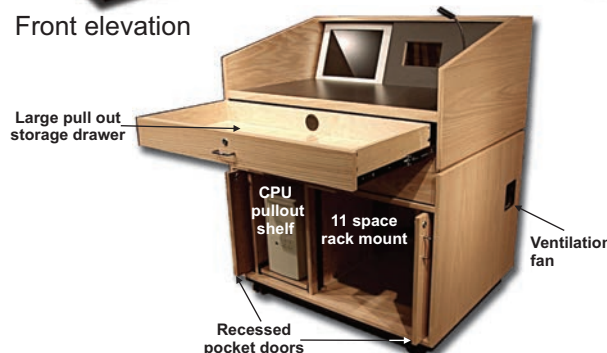
Delegate 10
Premier Line Lectern



Presenter's elevation

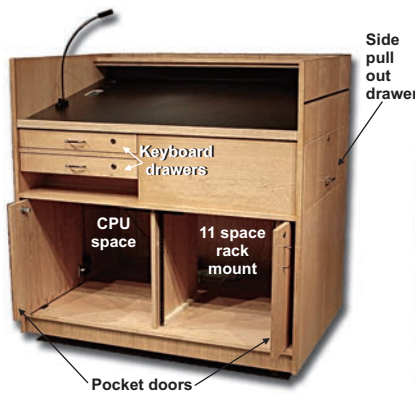


Small storage drawer & flip down panel for a dvd



Large pull out storage drawer
CPU pullout shelf
11 space rack mount
Recessed pocket doors
Ventilation fan

Delegate 11	
Dimensions	40" w x 48" h x 32" d
Features <i>As Shown</i>	Single sloped black matrix work surface Gooseneck reading lamp Two locking keyboard drawers Locking pull out side drawer Rear locking pocket doors Front locking access panel 11 space rack mount CPU tower space Electrical inlet Cable management throughout 6 outlet electrical strip Heavy duty swivel casters
Finish shown	A-1 grade plain sliced cherry with KSI clear natural finish
Options	Premier Line finishes, à la carte options



Front elevation



Presenter's elevation

The National Institutes of Health have depended on KSI for many of their premium presentation furniture needs.

Delegate 12	
Dimensions	32" w x 48" h x 32" d
Features <i>As Shown</i>	Flat charcoal matrix work surface Proprietary top crown moulding LCD monitor well Pull out keyboard/mouse shelf Pull out side drawer Rear locking bifold doors Front locking access panel 11 space rack mount CPU tower space Ventilation Fan Electrical inlet w/6 outlet electrical strip Cable management throughout Heavy duty swivel casters
Finish shown	A-1 grade plain sliced cherry with KSI clear natural finish
Options	Premier Line finishes, à la carte options



Delegate 12
Premier Line Lectern



Front elevation

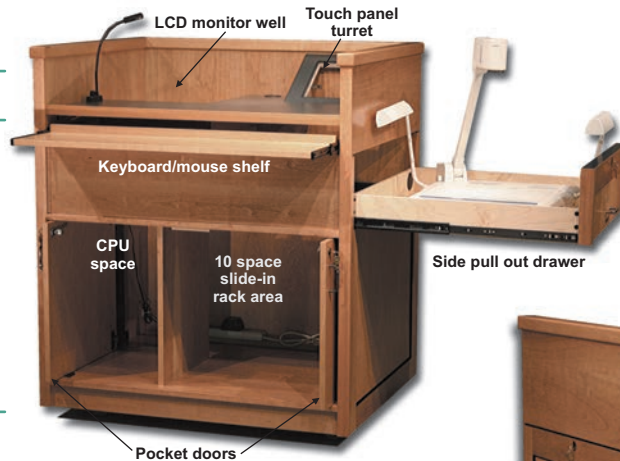


Presenter's elevation



Top molding detail

Delegate 16	
Dimensions	40" w x 48" h x 32" d
Features <i>As Shown</i>	Inset panels w/black reveals Flat-charcoal matrix work surface LCD monitor well Touch panel turret Gooseneck reading light Pull out keyboard/mouse shelf Locking side pull out drawer Rear locking pocket doors 10 space slide-in rack area CPU/storage space Cable management 6 outlet electrical strip Heavy duty recessed swivel casters
Finish shown	A-1 grade plain sliced cherry with KSI clear natural finish
Options	Premier Line finishes, à la carte options



Front elevation



Presenter's elevation

Inset panels with fine reveals blend perfectly with both traditional and contemporary environments alike. The perpendicular top grain with solid molding complete the design.

Delegate 18	
Dimensions	36" w x 48" h x 42" d
Features <i>As Shown</i>	Two step charcoal matrix work surface LCD and touch screen cutouts Top cantilever at 10" Keyboard/ mouse drawer Side pull out drawer 11 space rack mount in lower section CPU space Rear locking pocket doors Removable front access panel Ventilation fan Electrical inlet w/6 outlet power strip Heavy duty locking swivel casters
Finish shown	A-1 grade plain sliced red oak with KSI clear natural finish
Options	Premier Line finishes, select à la carte options

Delegate 18
Premier Line Lectern



Front elevation



Presenter's elevation

Our Delegate lectern is shown in a modified format to suit specific user requirements. A cantilevered top section allows the use of a tall chair to rest your feet.

Delegate 20

Dimensions 40" w x 48" h x 32" d

Features
As Shown Two step charcoal matrix work surface
LCD and touch screen cutouts
Gooseneck reading lamp
Detail moulding and trim
Keyboard/mouse drawer
Locking pull out side drawer
Rear locking pocket doors
Front locking access panel
11 space rack mount
CPU tower space
Cable management throughout
6 outlet electrical strip
Heavy duty swivel casters

Finish shown A-1 grade ribbon sliced sapele with KSI dark mahogany finish

Options Premier Line finishes, à la carte options



Side elevation



Front elevation

Detail moulding, ribbon sliced sapele and a rich dark mahogany finish makes this delegate lectern perfect for any high end corporate and government environment.



Two step work surface, keyboard/mouse drawer and side pull out drawer

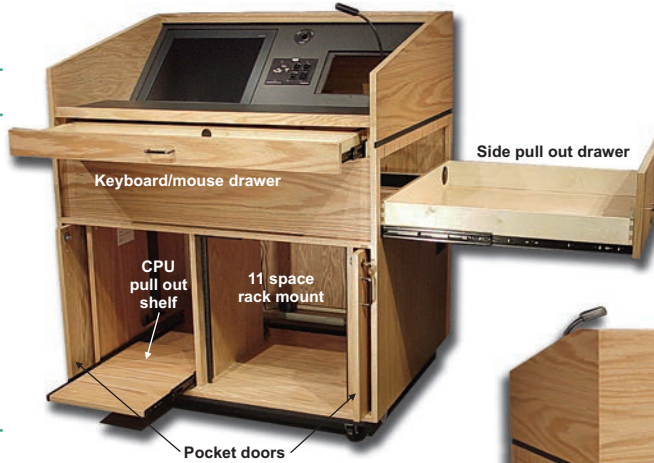
Delegate 21

Dimensions 40" w x 48" h x 32" d

Features
As Shown Three step charcoal matrix work surface
Gooseneck reading lamp
LCD, touch screen and interface cutouts
Locking keyboard/mouse drawer
Locking pull out side drawer
Rear locking pocket doors
Front locking access panel
11 space rack mount
Pull out CPU shelf
Ventilation Fan
Electrical inlet
Cable management throughout
6 outlet electrical strip
Recessed base

Finish shown A-1 grade plain sliced red oak with KSI clear natural finish

Options Premier Line finishes, à la carte options



Presenter's elevation

Delegate 21
Premier Line Lectern

Top perpendicular grain with a black reveal gives this lectern a contemporary appearance. Delegate 21 is a great choice for educational and instructional installations.

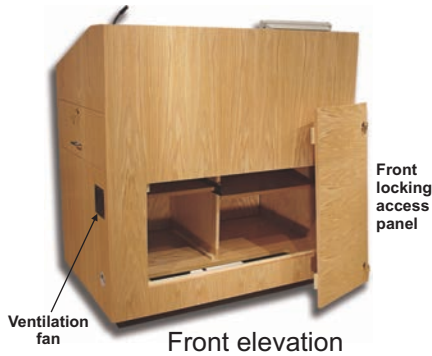


Front elevation



Three step work surface w/LCD & interface cutouts

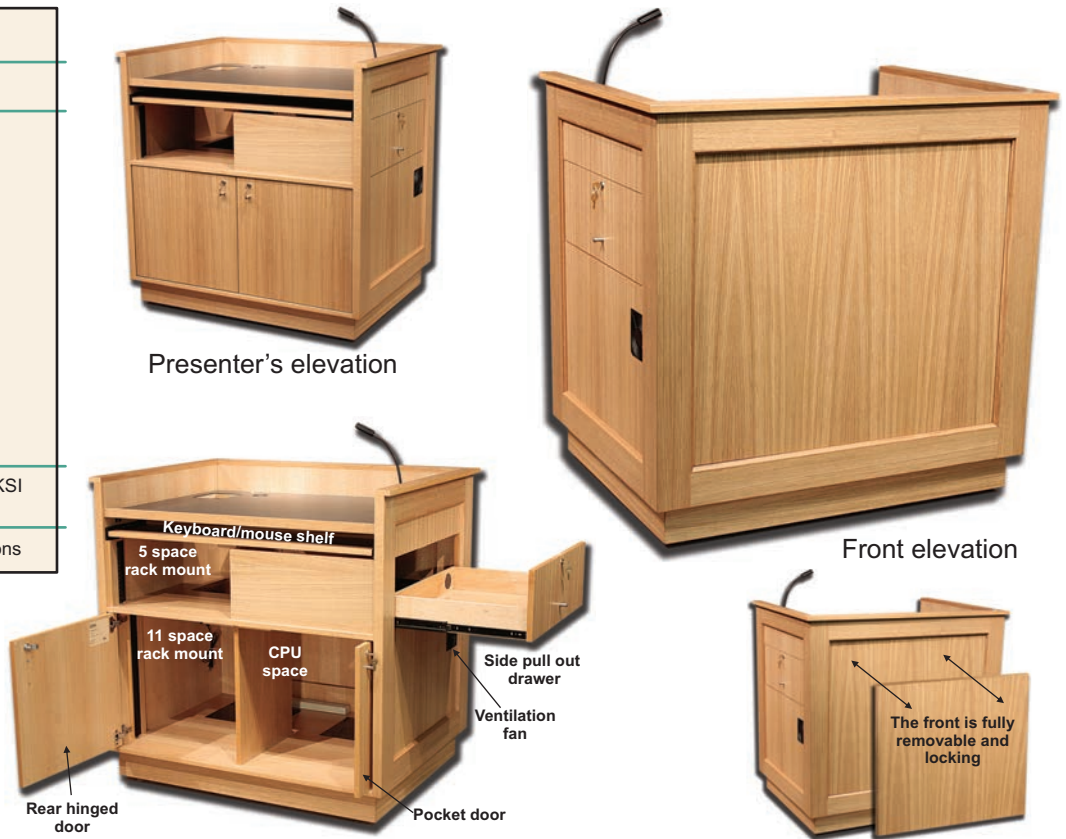
Delegate 22	
Dimensions	40" w x 48" h x 32" d
Features <i>As Shown</i>	Two step charcoal matrix work surface Gooseneck reading lamp LCD monitor well Pull out keyboard/mouse shelf Locking pull out side drawer Rear locking doors Front locking access panel Pull out storage shelf Adjustable shelf Ventilation Fan Electrical inlet Cable management throughout 6 outlet electrical strip Heavy duty swivel casters
Finish shown	A-1 grade plain sliced red oak with KSI clear natural finish
Options	Premier Line finishes, à la carte options



Delegate 23	
Dimensions	40" w x 48" h x 32" d
Features <i>As Shown</i>	Flat charcoal matrix work surface Undermount reading light Touch screen cutout Locking keyboard/mouse drawer Side pull out shelf Open storage section Rear locking pocket doors Front locking access panel 14 space rack mount section CPU tower section Ventilation Fan Electrical inlet w/6 outlet power strip Cable management throughout Heavy duty swivel casters
Finish shown	A-1 grade plain sliced cherry with KSI burnt cherry finish
Options	Premier Line finishes, à la carte options



Delegate 24	
Dimensions	42" w x 48" h x 32" d
Features <i>As Shown</i>	Recessed panel with detail moulding Flat charcoal matrix work surface Gooseneck reading light Cable Cubby cutout Keyboard/mouse shelf Side pull out drawer Upper 5 space rack section Rear locking pocket door, right Front removable front access panel Lower 11 space rack mount section CPU tower section Removable bottom access panels Ventilation Fans Electrical inlet w/6 outlet power strip Cable management throughout Heavy duty swivel casters
Finish shown	AA-A grade rift sawn white oak with KSI clear natural finish
Options	Premier Line finishes, à la carte options



KSI worked closely with the College of Notre Dame custom modifying these two models, fulfilling their lectern requirements. Let us assist you in designing your next job.

Statesman 35	
Dimensions	32" w x 42" h x 23" d to 32" w x 50" h x 23" d
Features <i>As Shown</i>	Single slope charcoal matrix work surface Recessed panel construction Detail moulding Side pull out shelf Rear storage section Electric height adjustment Electrical inlet w/6 outlet electrical strip Cable management throughout Heavy duty swivel casters
Finish shown	AA-A grade rift sawn white oak with KSI clear natural finish
Options	Premier Line finishes, à la carte options

Statesman 35
Premier Line Lectern



Closeup of corner detail

➤ This model features
Electrical Height Adjustment

Congressional Pedestal 2

Dimensions 25" w x 46" h x 23" d

Features
As Shown Single sloped charcoal matrix work surface
Gooseneck reading lamp
Rear locking hinged door
Two adjustable shelves
Electrical inlet w/6 outlet strip
Cable management throughout
Black powder coat aluminum plate

Finish shown A-1 grade plain sliced maple with KSI clear natural finish

Options Premier Line finishes, select à la carte options



Presenter's elevation



Front elevation

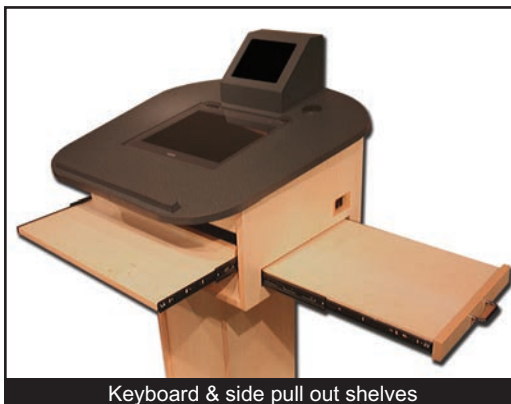
Pedestal 4

Dimensions 30" w x 48" h x 30" d

Features
As Shown Charcoal matrix work surface
Touch screen turret
LCD touch panel mount w/plexiglass
Keyboard/mouse shelf
Side pull out shelf
Cable management throughout
Electrical inlet w/6 outlet strip

Finish shown A-1 grade plain sliced maple with KSI clear natural finish

Options Premier Line finishes, select à la carte options



Keyboard & side pull out shelves



Presenter's elevation



Front elevation

Pedestal 4
Premier Line Lectern

Executive 2	
Dimensions	32" w x 48" h x 23.5" d
Features <i>As Shown</i>	Single slope charcoal matrix work surface Undermount reading lamp Dual LCD monitor cutouts LCD clock Fixed height middle shelf Electrical inlet Cable management throughout 6 outlet electrical strip Tilt back casters
Finish shown	A-1 grade plain sliced mahogany with KSI dark mahogany finish
Options	Premier Line finishes, à la carte options



Presenter's elevation

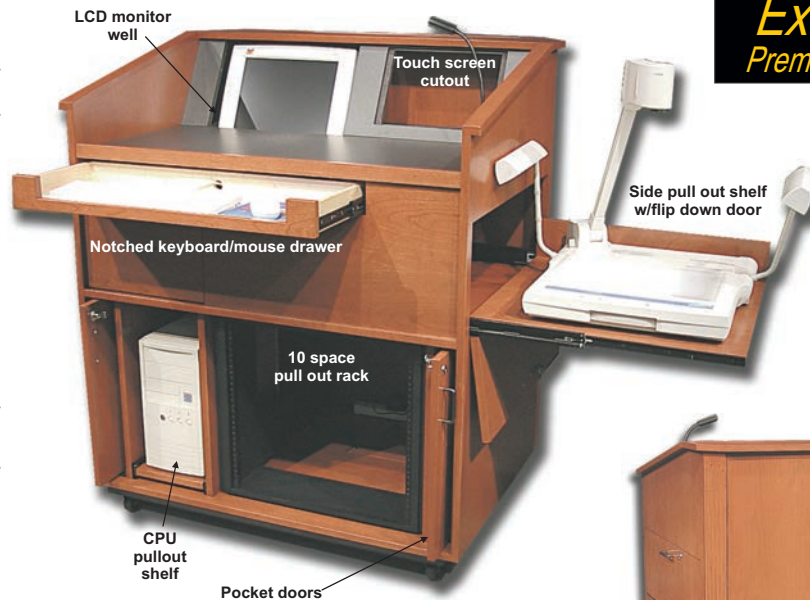


Front elevation



Laser cut logo for the Joint Chiefs of Staff

Executive 8	
Dimensions	40" w x 48" h x 32" d
Features <i>As Shown</i>	Two step charcoal matrix work surface Gooseneck reading lamp LCD well and touch screen cutouts Notched front keyboard/mouse drawer Pull out side shelf w/flip down door Rear locking pocket doors 10 space pull out rack mount Pull out CPU shelf Ventilation Fan Electrical inlet Cable management throughout 6 outlet electrical strip Recessed base
Finish shown	A-1 grade plain sliced cherry with KSI medium cherry finish
Options	Premier Line finishes, à la carte options



Presenter's elevation

Executive 8
Premier Line Lectern



Presenter's elevation



Front elevation

Presidential	
Dimensions	36" w x 42" h x 30" d to 36" w x 48" h x 30" d
Features <i>As Shown</i>	Solid wood dentil and fluted molding Three step charcoal matrix work surface Touch screen and interface cutouts Keyboard/mouse drawer Side pull out document camera drawer Cable management throughout 6 outlet electrical strip Electrically height adjustment
Finish shown	A-1 grade plain sliced cherry with KSI dark cherry finish
Options	Premier Line finishes, select à la carte options



Presenter's elevation



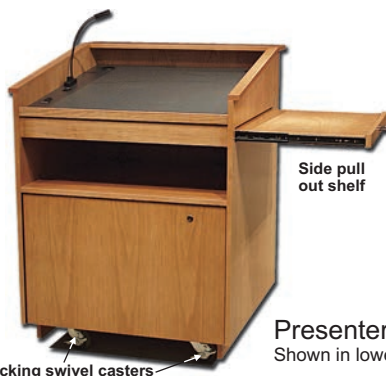
Front Elevation



Front elevation

➤ This model features Electrical Height Adjustment

Statesman 12-EL	
Dimensions	32" w x 42" h x 32" d to 32" w x 50" h x 32" d
Features <i>As Shown</i>	Single slope charcoal matrix work surface Gooseneck reading lamp Dual XLR microphone inputs and outputs Side pull out shelf Electric height adjustment Electrical inlet Cable management throughout 6 outlet electrical strip Locking heavy duty swivel casters
Finish shown	A-1 grade plain sliced cherry with maple and walnut inlay w/KSI clear natural finish
Options	Premier Line finishes, select à la carte options



Presenter's Elevation
Shown in lowered position



Presenter's elevation
Shown in raised position

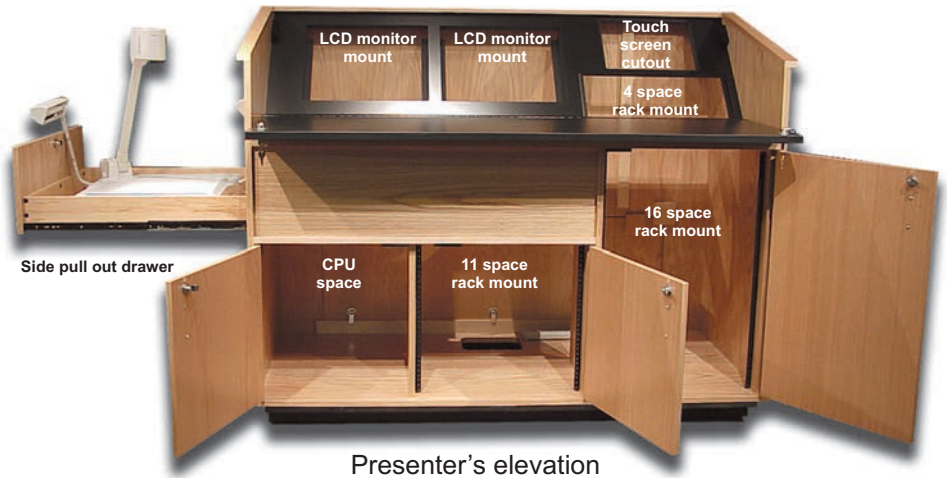
➤ This model features Electrical Height Adjustment



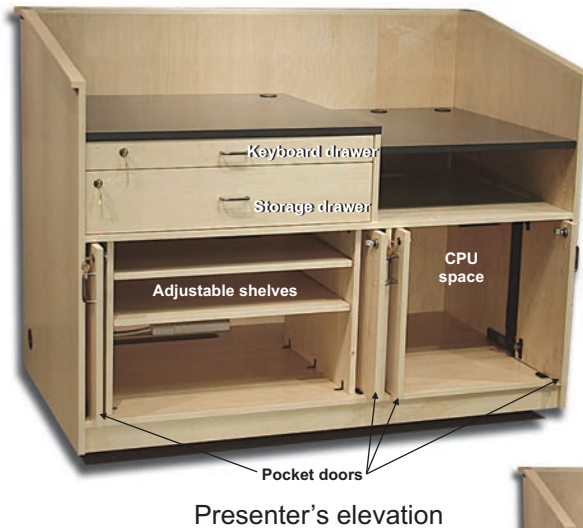
Front Elevation
Shown in lowered position

Statesman 12-EL Premier Line Lectern

Statesman 18	
Dimensions	60" w x 48" h x 32" d
Features <i>As Shown</i>	Fold down security work surface Locking pull out side drawer 16 space rack, presenter's right 11 space rack, presenter's center CPU section, presenter's left Rear locking hinged doors Front locking access panel Ventilation Fan Electrical inlet Cable management throughout 6 outlet electrical strip Recessed black base
Finish shown	A-1 grade plain sliced red oak with KSI clear natural finish
Options	Premier Line finishes, à la carte options



Statesman 30	
Dimensions	60" w x 48" h x 32" d
Features <i>As Shown</i>	Flat-split charcoal matrix work surface Locking keyboard/mouse drawer Locking storage drawer Two sets locking pocket doors Two adjustable shelves Dual CPU tower space Ventilation Fan Electrical inlet Cable management throughout 6 outlet electrical strip Heavy duty swivel casters
Finish shown	A-1 grade plain sliced maple with KSI clear natural finish
Options	Premier Line finishes, à la carte options



➤ Statesman 30 has a large 60" size, great for classroom applications

Statesman 30
Premier Line Lectern

Statesman 27	
Dimensions	48" w x 48" h x 32" d
Features <i>As Shown</i>	Single slope charcoal matrix work surface Gooseneck reading lamp Touch screen and LCD cutouts Keyboard/mouse shelf Rear pull out visual presenter drawer Rear locking pocket doors Front locking access panel 11 space rack mount, presenter's left 14 space rack mount, presenter's right Ventilation Fan Electrical inlet Cable management throughout 6 outlet electrical strip Heavy duty swivel casters
Finish shown	A-1 grade plain sliced red oak with KSI clear natural finish
Options	Premier Line finishes, à la carte options



Statesman 28	
Dimensions	40" w x 48" h x 32" d
Features <i>As Shown</i>	Fold down security work surface LCD and interface cutouts Locking keyboard/mouse drawer Locking pull out side drawer Rear locking pocket doors Front locking access panel 11 space rack mount CPU tower space Ventilation Fan Electrical inlet Cable management throughout 6 outlet electrical strip Recessed black base
Finish shown	A-1 grade plain sliced red oak with KSI clear natural finish
Options	Premier Line finishes, à la carte options



Statesman 28
Premier Line Lectern



Presenter's elevation



Diplomat 1

Dimensions 28" w x 46" h x 26" d

Features
As Shown
Overhanging upper section
Two step charcoal matrix work surface
Touch screen cutout
Cable management throughout
6 outlet electrical strip
Heavy duty recessed swivel casters

Finish shown A-1 grade plain sliced cherry with KSI sunrise burnt cherry finish

Options Premier Line finishes, select à la carte options

The KSI L-800-28 Diplomat Lectern features an overhanging top section with large perpendicular chamfered corners. The addition of an inset square pedestal creates a contemporary flair to this unique design.



Closeup of large chamfered corners



Front elevation



Presenter's elevation

Swivel Top Delegate

Dimensions 32" w x 48" h x 27" d

Features
As Shown
Flat charcoal matrix work surface
Detail moulding
Gooseneck reading lamp
Pull out keyboard shelf
Lower storage section
Rear locking doors
Swivel top turns around 180°
Removable bottom access panel
Cable management throughout
6 outlet electrical strip
Heavy duty locking swivel casters

Finish shown A-1 grade plain sliced cherry with KSI brown cherry finish

Options Premier Line finishes, à la carte options

Swivel Top Delegate Premier Line Lectern



Top section swivels 180°



Presenter's elevation



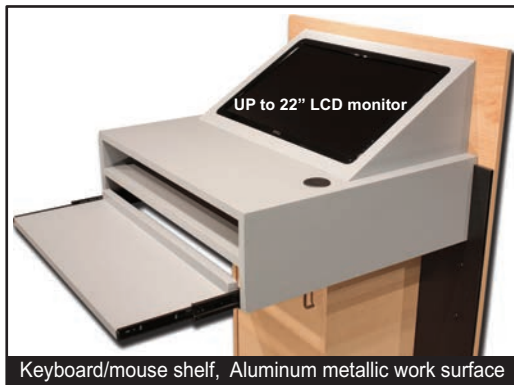
Front elevation



City of Gaithersburg Counsel Chambers

➤ *Ideal for court rooms and counsel chambers*

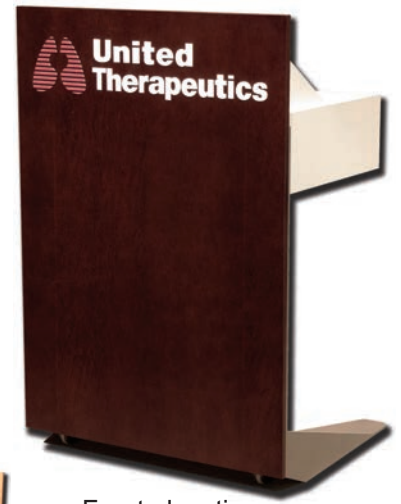
LC-3000	
Dimensions	32" w x 48" h x 26" d
Features <i>As Shown</i>	Aluminum matrix laminate work surface LCD Monitor cutout Black powder coat aluminum frame Keyboard pull out shelf Upper storage shelf for papers, etc. Lower storage section Electrical inlet w/6 outlet power strip Cable management throughout Heavy duty front tilt casters
Finish shown	A-1 grade quartered steamed beech with KSI clear lacquer finish
Options	Premier Line finishes, select à la carte options



Front elevation



Presenter's elevation



Front elevation

United Therapeutics

Client identity logo
Plain slice maple w/midnight black finish
Metallic nickel powder coat aluminum
Cream laminate work surface

Statesman 31	
Dimensions	32" w x 42" h x 32" d to
Features <i>As Shown</i>	Flat charcoal matrix work surface Gooseneck reading lamp Front stainless corners Keyboard/mouse shelf Adjustable shelves Removable front logo panel Side pull out shelf Cable management throughout 6 outlet electrical strip
Finish shown	Gray laminate and brown wood grain laminate, charcoal matrix
Options	Premier Line finishes, select à la carte options



Presenter's elevation



Front elevation



Front elevation

Statesman 31
Premier Line Lectern

L-100-25SS	
Dimensions	25" w x 48" h x 23.5" d
Features <i>As Shown</i>	<ul style="list-style-type: none"> Flat charcoal matrix work surface Gooseneck reading light One KSI 811-HP loudspeaker Super cardioid condenser microphone 60 watt mixer/amp with 6 inputs Storage section below the work surface Rear combination locking doors Right side combination lock access panel 11 space rack mount section Ventilation Fan Electrical inlet w/6 outlet power strip Cable management throughout Heavy duty swivel casters
Finish shown	A-1 grade plain sliced maple with KSI clear natural finish
Options	Premier Line finishes, select à la carte options

KSI's L-100-25SS is an ideal choice when a mobile lectern with a quality sound system is required. The front contains a KSI 811-HP near field loudspeaker giving you unsurpassed clarity and definition in this format. 60 watts of power and 6 inputs provide ample power and versatility. A super cardioid condenser microphone minimizes feedback which may occur due to the close proximity of the microphone and the loudspeaker.



Presenter's elevation



Front elevation



60 watt rack mount mixer/amp with 6 inputs



Side access panel with combination locks



FED EX



National Museum of the Marine Corps

Mix Desk 25	
Dimensions	25" w x 46" h x 30" d
Features <i>As Shown</i>	Upper section for a sixteen channel audio mixing console Removable locking security cover with a storage section 13 space rack in lower section Rear locking pocket door for the rack Front locking door for mixer & rack access Ventilation fan Removable bottom access panel Cable management throughout Two 6 outlet electrical strips Heavy duty swivel casters
Finish shown	A-1 grade white maple with KSI clear maple finish
Options	Premier Line finishes, à la carte options



Presenters' Elevation



Presenters' Elevation



Front Elevation



Ventilation fan

Pocket Door

13 Space Rack

Mix Desk 88

Premier Line Portable Mixing Console Desk

Mix Desk 88	
Dimensions	88" w x 48" h x 32" d
Features <i>As Shown</i>	Charcoal matrix laminate work surface Two 14 space rack mount sections Upper 12 space rack mount section Front locking access doors Two ventilation fans Removable bottom access panels Cable management throughout 6 outlet electrical strips 8 heavy duty swivel casters
Finish shown	A-1 grade white maple with KSI clear maple finish
Options	Premier Line finishes, à la carte options



Presenters' Elevation



Upper 12 space rack mount section



Front Elevation

Ventilation intake grilles

Lectern Workstation 6	
Dimensions	76" w x 48" h x 32" d
Features <i>As Shown</i>	Two step charcoal matrix work surface Two gooseneck reading lamp Two Locking keyboard/mouse drawer Locking pull out side drawer Rear locking pocket doors Front locking access panels Two 11 space rack mount sections Center adjustable shelf section Two ventilation fans Electrical inlet Cable management throughout Two 6 outlet electrical strips Heavy duty swivel casters
Finish shown	A-1 grade ribbon striped sapele with KSI medium mahogany finish
Options	Premier Line finishes, à la carte options



Presenter's elevation



Presenter's elevation



Front elevation

Lectern Workstation 7	
Dimensions	96" w x 48" h x 32" d
Features <i>As Shown</i>	Gray laminate work surface Two keyboard/mouse drawers Rear locking doors Front locking access panels Two 14 space rack mount sections Two CPU tower sections Two ventilation fans Three removable bottom access panels Cable management throughout 6 outlet electrical strip Recessed base
Finish shown	A-1 grade ribbon striped sapele with KSI medium red mahogany finish
Options	Premier Line finishes, à la carte options

Lectern Workstation 7
Premier Line Lectern



Presenter's elevation

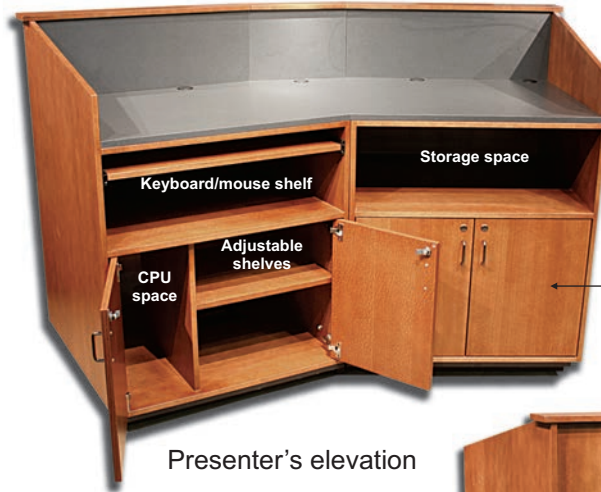


Presenter's elevation



Front elevation

Lectern Workstation 10	
Dimensions	80" w x 48" h x 32" d
Features <i>As Shown</i>	Flat charcoal matrix work surface Keyboard/mouse shelf Rear locking doors Two adjustable shelf sections Two CPU tower sections Ventilation Fan Electrical inlet Cable management throughout 6 outlet electrical strip Recessed base
Finish shown	A-1 grade rift sawn oak with KSI medium oak finish
Options	Premier Line finishes, à la carte options



Right section is a mirror image of the left section

Presenter's elevation



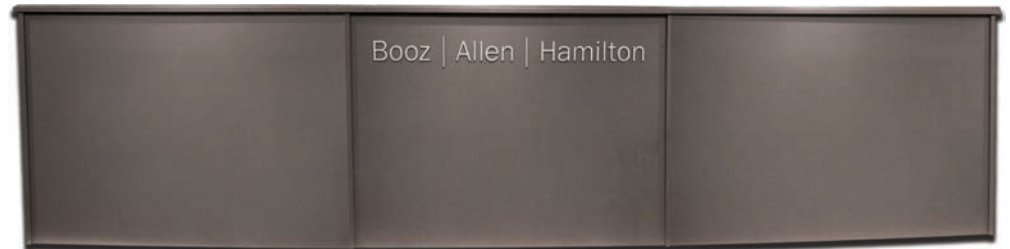
Front elevation



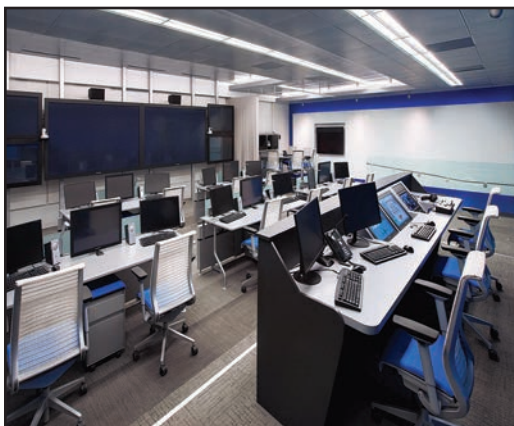
Front elevation

Booz Allen Hamilton	
Dimensions	160" w x 40" h x 32" d
Features <i>As Shown</i>	Split aluminum laminate work surface Curved front Cutouts for (2) Crestron 24" touch screen 11 space rack mount on the work surface Mobile 11 space rack
Finish shown	Charcoal matrix laminate with metallic aluminum laminate work surface
Options	Premier Line finishes, select à la carte options

Booz Allen Hamilton
Premier Line Lectern



Front elevation



Presenter's Elevation

When Booz Allen Hamilton required two large desks for their facilities, they looked to KSI to meet their needs. KSI worked closely with BAH integrators on the design and implementation for a clean, contemporary installation. The curved front is finished in charcoal matrix laminate. The work surface area is finished in a metallic aluminum laminate. The client identity is finished in brushed aluminum.

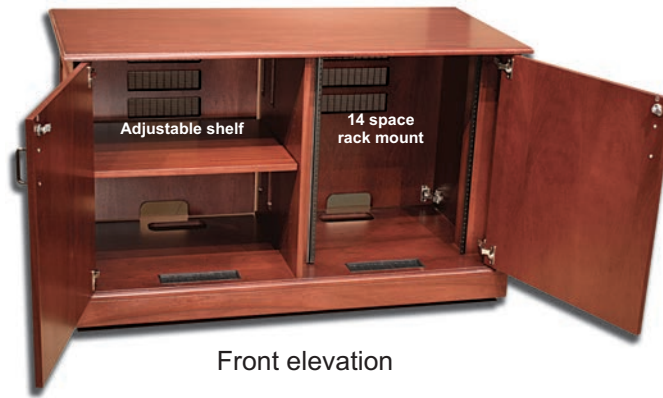
Credenza 2	
Dimensions	48" w x 32" h x 24" d
Features <i>As Shown</i>	Wood top with edge detail Detail moulding Left side adjustable shelf Right side 14 space rack mount Front locking doors Removable rear locking doors Cable management throughout
Finish shown	A-1 grade ribbon sliced sapele with KSI red mahogany finish
Options	Premier Line finishes, select à la carte options



Rear elevation



Front elevation



Front elevation

Credenza 3	
Dimensions	52" w x 32" h x 32" d
Features <i>As Shown</i>	Walnut work surface Detail moulding Pull out keyboard/mouse shelf Locking pull out side drawer Rear locking pocket doors Front locking access panel One 10 space rack mount section CPU tower space Ventilation Fan Electrical inlet Cable management throughout 6 outlet electrical strip Heavy duty swivel casters
Finish shown	A-1 grade plain sliced walnut with KSI red walnut finish
Options	Premier Line finishes, select à la carte options



Presenter's elevation



Presenter's elevation



Rear elevation

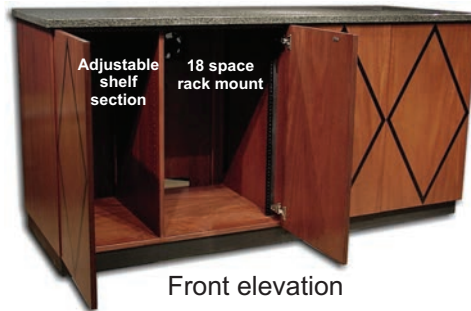
Credenza 4	
Dimensions	60" w x 36" h x 20" d
Features <i>As Shown</i>	Solid granite top Black inlays Two 18 space rack mount sections Two storage sections, left & right Front hinged doors Rear access panels Ventilation fans Cable management throughout 6 outlet electrical strip Recessed base
Finish shown	A-1 grade plain sliced mahogany with a KSI custom color finish
Options	Premier Line finishes, select à la carte options



Front elevation



Detail of granite top

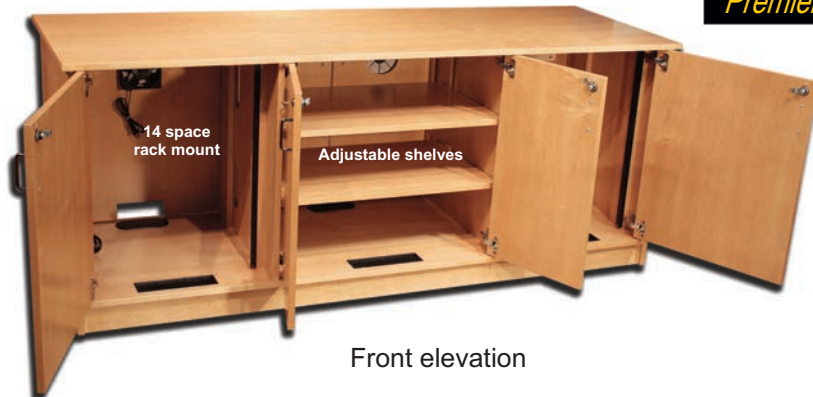


Front elevation



Rear elevation

Credenza 6	
Dimensions	72" w x 31.5" h x 23" d
Features <i>As Shown</i>	Two 14 space rack mount sections One adjustable shelf section, centered Front locking hinged doors Rear access panels Ventilation fans Cable management throughout 6 outlet electrical strip 8 Heavy duty swivel casters
Finish shown	A-1 grade plain sliced maple with KSI honey maple finish
Options	Premier Line finishes, select à la carte options



Front elevation



Rear elevation



Front elevation

Credenza 7	
Dimensions	96" w x 31.5" h x 23" d
Features <i>As Shown</i>	Front locking pocket doors with push latches Rear access panels One 14 space rack mount section, right Three adjustable shelf sections Ventilation fan in rack section Cable management throughout 10 Heavy duty swivel casters
Finish shown	A-1 grade ribbon striped sapele with a KSI clear natural finish
Options	Premier Line finishes, select à la carte options



Front Elevation



Rear Elevation



Credenza 9	
Dimensions	66" w x 31.5" h x 24" d
Features <i>As Shown</i>	Wood work surface top Two KSI 601 loudspeakers Front locking smoked plexiglass doors Two 10 space rack mount sections One center 16 space rack mount section Rear access panels Routed pull handles on each end Ventilation fans Electrical inlet Cable management throughout 8 Heavy duty swivel casters
Finish shown	A-1 grade plain sliced cherry with KSI burnt cherry finish
Options	Premier Line finishes, select à la carte options



Front Elevation



Rear Elevation



Front Elevation

Credenza 72M

Dimensions 72" w x 31.5" h x 22" d

Features
As Shown Electric pop up LCD mount
Two 14 space rack mounts, left & right
Keyboard/mouse drawer
Center storage section
Front locking doors
Rear locking doors
4 Ventilation fans
Cable management throughout
Heavy duty swivel casters

Finish shown A-1 grade plain sliced cherry with KSI dark cherry finish

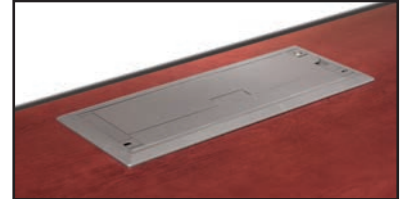
Options Premier Line finishes, select à la carte options



Rear elevation



Front elevation



Electric pop up LCD monitor mount, lowered position



Keyboard/Mouse Drawer



14 space rack mount, left and right



Electric pop up LCD monitor mount, raised position

Credenza 14

Dimensions 48" w x 72" h x 23" d

Features
As Shown Dual steel pole LCD mounting panel
Simply bolt your mount to the flat panel
Dual 14 space rack mounts
Front locking doors
Rear locking vented doors
Cable management throughout
2-6 outlet power strip
Heavy duty swivel casters

Finish shown A-1 grade ribbon striped sapele with KSI dark mahogany finish

Options Premier Line finishes, select à la carte options

Credenza 14
Premier Line Credenza



Front elevation



Extra heavy steel mounting posts keep your LCD panel stable and secure

Credenza 12

Dimensions 72" w x 36" h x 20" d

Features Red oak top with roman ogee edge profile
As Shown Detail molding
Eight upper storage drawers
Four lower hanging file drawers
Solid brass hardware

Finish shown A-1 grade plain sliced red oak with KSI dark oak finish

Options Premier Line finishes, select à la carte options



Front elevation

Credenza 12 and Executive Desk 4 are a great choice for the high end military office. These two pieces were installed at Fort Bragg.



Each section has two storage drawers



Each section has a hanging file drawer

Executive Desk 4

Dimensions 60" w x 31" h x 72" d

Features Red oak work surface with roman ogee edge detail
As Shown Detail molding
Four upper maple storage drawers
Two lower maple hanging file drawers
Cable well and management throughout
Seven pieces field assemble with bolts and tee nuts

Finish shown A-1 grade plain sliced red oak with KSI dark oak finish

Options Premier Line finishes, Select à la carte options

Executive Desk 4
Premier Line Presentation Desk



Front elevation

Presenter's elevation



Each section has a hanging file drawer



Each section has two storage drawers

PD-72BC Bow Front

Dimensions 70" w x 36.75" h x 36" d

Features Two step adjustable charcoal matrix work surface
As Shown Cable cubby cutout
 Two (2) keyboard shelves
 Swing out 24" LCD monitor on the front
 Cable management throughout
 6 outlet electrical strip
 Heavy duty swivel casters

Finish shown AA grade quartered steamed beech,
 Charcoal matrix laminate

Options Premier Line finishes, à la carte options

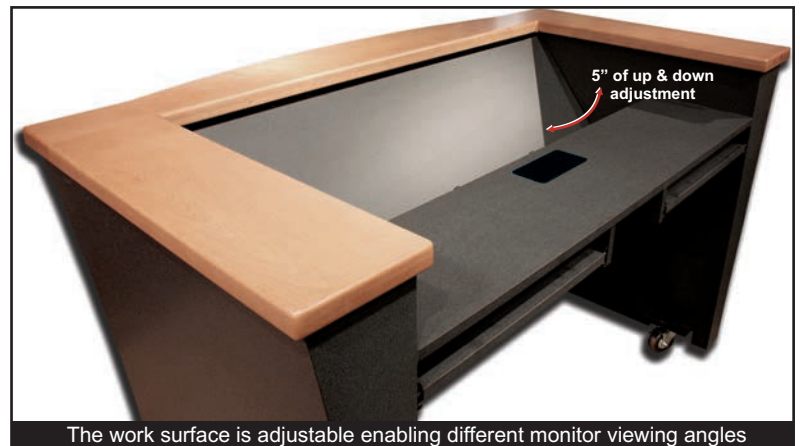
Tapered curved sides with 6 curved front panels and deep black reveals give this presentation desk a striking appearance. The front mounted monitor is used to display information during a television broadcast. The work surface can hold two 24" monitors and is adjustable in its viewing angle.



Presenter's elevation



Close-up of European Steamed Beech top rails



The work surface is adjustable enabling different monitor viewing angles



LCD monitor in closed position



LCD monitor swings out for easy servicing and hook up



Side elevation

PR-Desk 4LR	
Dimensions	72" w x 52" h x 60" d
Features <i>As Shown</i>	Charcoal matrix work surface Interface cutouts L-shape to mount against a wall 30 space rack with smoked plexiglass door Cable management throughout 6 outlet electrical strip
Finish shown	A-1 grade plain sliced cherry with KSI dark cherry finish
Options	Premier Line finishes, select à la carte options



30 space rack with an inset smoked plexiglass door



Front elevation



Presenter's elevation

PR-Desk 4LR is designed to sit against a right sided wall in the rear of a room. The operator has plenty of desk space and 30 spaces of rack mounting provide plenty of room for all the electronics.

PR-Desk 5	
Dimensions	60" w x 40" h x 30" d
Features <i>As Shown</i>	Three step charcoal matrix work surface Gooseneck reading lamp LCD and touch screen cutouts Keyboard/mouse drawer Side pull out drawer 8 space rack in lower section Front access panel for rack Ventilation fan Cable management throughout Bottom access to floor box 6 outlet electrical strip Recessed base
Finish shown	A-1 grade plain sliced maple with KSI clear natural finish
Options	Premier Line finishes, select à la carte options



Presenter's elevation

PR-Desk 5
Premier Line Presentation Desk

➤ Ideal for educational environments



Three step work with LCD and touch screen cutouts



Pull out side drawer, 8 space rack behind door

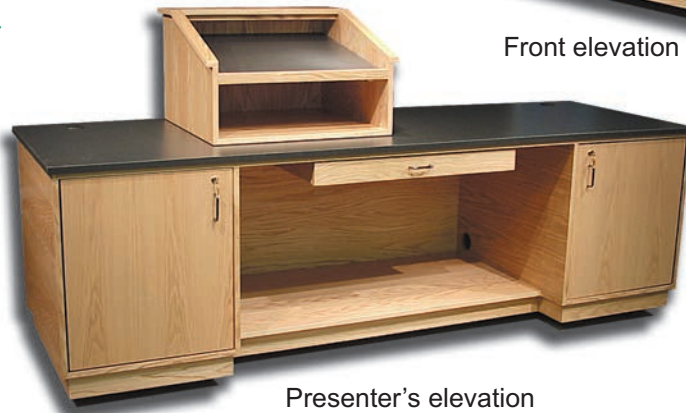


Keyboard/mouse drawer

PR-Desk96A	
Dimensions	96" w x 31.5" h x 30" d
Features <i>As Shown</i>	Flat charcoal matrix work surface Keyboard/mouse drawer Rear locking doors, presenter's side Front locking vented access doors Two 14 space rack mount, left and right Portable table top lectern Center lower storage shelf Cable management throughout 6 outlet electrical strip Heavy duty swivel casters
Finish shown	A-1 grade plain sliced red oak with KSI clear natural finish
Options	Premier Line finishes, select à la carte options



Front elevation



Presenter's elevation



Keyboard/mouse drawer



14 space rack mount and storage for the table top lectern

PR-Desk3	
Dimensions	61" w x 48" h x 30" d
Features <i>As Shown</i>	Charcoal matrix work surface Ample storage Adjustable shelves Rear locking doors Removable bottom access floor panel Cable management throughout 6 outlet electrical strip Recessed base
Finish shown	A-1 grade plain maple with KSI clear natural finish
Options	Premier Line finishes, select à la carte options

PR-Desk3
Premier Line Presentation Desk



Presenter's elevation

➤ Ideal for educational environments



Five cutouts for multiple interfaces



Storage space

Adjustable shelves

Desk space for a chair



Front elevation

PR-Desk 10	
Dimensions	96" w x 31.5" h x 28" d
Features <i>As Shown</i>	Charcoal matrix laminate work surface with solid cherry bullnose Two (2) 14 space rack mounts Front locking doors Rear locking doors Passive ventilation Cable management throughout 6 outlet electrical strip
Finish shown	A-1 grade plain sliced cherry with KSI burnt cherry finish
Options	Premier Line finishes, select à la carte options



Front elevation



Front locking door with passive ventilation



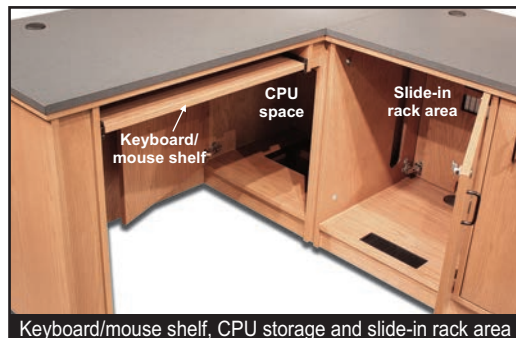
Presenter's elevation

PR-Desk 15L	
Dimensions	60" w x 31.5" h x 72" d
Features <i>As Shown</i>	Charcoal matrix work surface Keyboard/mouse shelf CPU space Two (2) slide in rack sections Passive ventilation Front locking doors Rear locking doors Cable management throughout 6 outlet electrical strip Heavy duty swivel casters
Finish shown	A-1 grade plain sliced red oak with KSI medium oak finish
Options	Premier Line finishes, select à la carte options

PR-Desk 15L
Premier Line Presentation Desk



Presenter's elevation



Keyboard/mouse shelf, CPU storage and slide-in rack area



Front elevation



Rear elevation

PR-Desk 89A

Dimensions 89" w x 31.5" h x 30" d

Features
As Shown Light gray laminate work surface
Solid cherry bull nose on presenter's side
Touch screen drawer
Keyboard/mouse shelf
Pullout document camera drawer
13 space rack, presenter's left
10 space rack, presenters right
CPU space, presenter's right
Ventilation fans
Cable management throughout
6 outlet electrical strip

Finish shown A-1 grade plain sliced cherry with KSI dark cherry finish

Options Premier Line finishes, select à la carte options



Presenter's elevation



Pull out drawer for visual presenter



Pull out drawer with a touch screen mount



10 space rack mount and CPU space



13 space rack mount

PR-32-8 Presenter's Cart

Dimensions 32" w x 36" h x 23" d

Features
As Shown Charcoal matrix work surface
Solid maple bull nose edge
Large storage drawer
Rear locking pocket doors
Two adjustable shelves
Electrical inlet w/6 outlet strip
Cable management
Recessed swivel casters

Finish shown A-1 grade plain sliced maple with KSI clear natural finish

Options Premier Line finishes, select à la carte options



Presenter's elevation

PR-32-8
Premier Line Presenter's Cart



Adjustable shelves

Recessed pocket doors

Presenter's elevation



Front elevation



Large pull out storage drawer

PR-44L Presenter's Cart

Dimensions 44" w x 42" h x 23" d

Features Charcoal matrix work surface
As Shown Keyboard/mouse shelf
 Pull out shelf
 15 space rack, presenter's right
 Adjustable shelves, presenter's left
 Removable front access panel
 Removable bottom access panel
 Cable management throughout
 6 outlet electrical strip
 Recessed swivel casters

Finish shown A-1 grade plain sliced cherry with KSI medium cherry finish

Options Premier Line finishes, select à la carte options



Front elevation



Presenter's elevation



Side pull out shelf and keyboard/mouse shelf



Front access panel



Presenter's elevation

PR-55-9 Presenter's Cart

Dimensions 55" w x 32" h x 30" d

Features Charcoal matrix work surface
As Shown Large locking storage drawer
 Lower storage section w/adjustable shelf
 15 space rack mount
 Rear locking doors
 Front locking vented door
 Electrical inlet w/6 outlet strip
 Cable management
 Recessed swivel casters

Finish shown A-1 grade plain sliced red oak with KSI clear natural finish

Options Premier Line finishes, select à la carte options



Presenter's elevation

PR-55-9
Premier Line Presenter's Cart



Large pull out storage drawer



Presenter's elevation



Rear elevation

V-240T V Shape Table

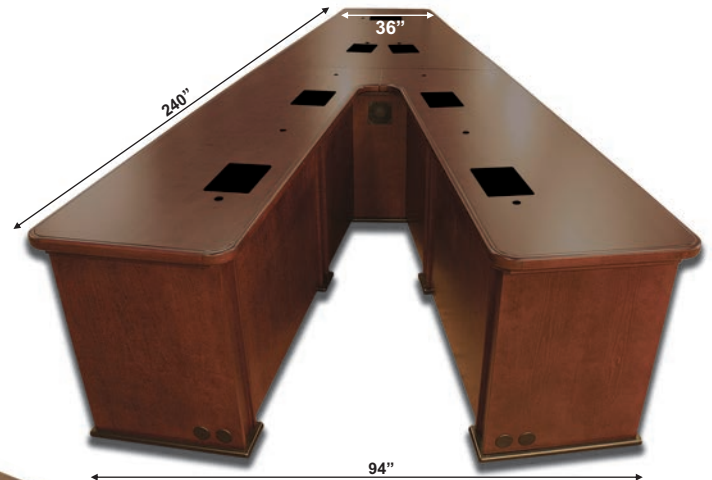
Dimensions 36" w to 94" w x 31" h x 240" l

Features
As Shown Book matched cherry top
KSI leg and I beam construction
Smooth bull nose edge treatment
3" radius corners
3 piece top
8 space rack mount
Ventilation fan
Interface box cutouts
Access panels for floor boxes

Finish shown A-1 grade plain sliced cherry with KSI dark cherry finish

Options Premier Line finishes, select à la carte options

KSI Conference Tables are hand crafted to the highest of standards. Only the choicest veneers and solids are utilized assuring you unsurpassed quality and value. Any size, any shape, we can deliver what you need to your exact specifications.



W-120T Wedge Table

Dimensions 36" w to 48" w x 31" h x 120" l

Features
As Shown Book matched black walnut top
KSI solid wedge base construction
Smooth bull nose edge treatment
3" radius corners
1 piece top
Access panels for connection to floor boxes

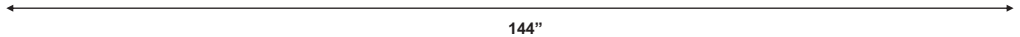
Finish shown A-1 grade plain sliced black walnut with KSI's clear natural finish

Options Premier Line finishes, select à la carte options

W-120T
Premier Line Conference Table



RT-144 Race Track Table	
Dimensions	144" l x 60" w x 31" h
Features <i>As Shown</i>	Premium book matched two piece top Bull nose solid wood edging KSI / beam construction Removable floor access panels Notches for floor track
Finish shown	AA grade ribbon sliced sapele with KSI dark mahogany finish
Options	Premier line finishes, select à la carte options



31"



Removable access panels on each leg

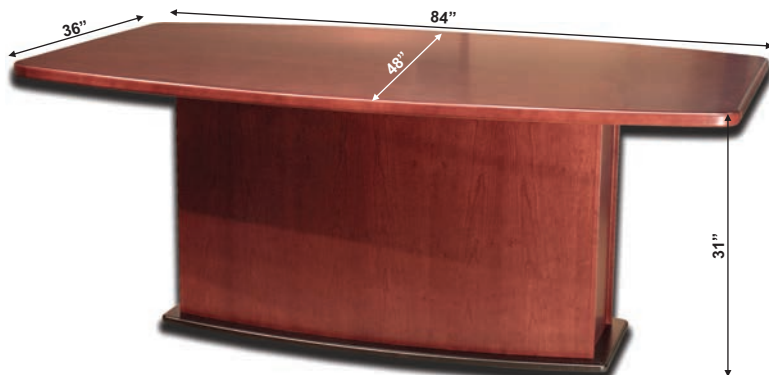
KSI race track conference tables are a great choice for large rooms. The smooth shape of the top allows chairs to be placed all the way around. You can order any size to suite any room. Give us a call or email for a custom quote and specification for your next job.



R-60T Round Table	
Dimensions	60" l x 60" w x 31" h and 42" l x 42" w x 31" h
Features <i>As Shown</i>	Premium book matched top Solid wood edging Four drop leaves with latches Single octagonal base
Finish shown	AA grade ribbon sliced sapele with KSI natural mahogany finish
Options	Premier line finishes, select à la carte options



B-84T Boat Shape Table	
Dimensions	84" l x 48" w (center) x 36" w (ends) x 31" h
Features <i>As Shown</i>	Boat shape top with solid bullnose Boat shape pedestal base Black plinth base
Finish shown	A-1 grade plain sliced cherry with KSI dark cherry finish
Options	Premier Line finishes, select à la carte options





Front Elevation

KSI Delegate 42NCT

40" w x 32" d x 48" h
Stainless steel reveal
KSI ribbon striped Makore with KSI Clear Finish
Split work surface for an LCD monitor and cable cubby
Keyboard/mouse shelf
Rear locking doors
Large lower storage section
Heavy duty locking casters



Presenter's Elevation



Front Elevation

KSI Delegate 32 NIH

32" w x 23-1/2" d x 48" h
Black laminate reveal
KSI ribbon striped Sapele with KSI Clear Finish
KSI installed sound system with 6 channel mixer
and 100 watt power
Heavy duty casters



Presenter's Elevation

KSI Statesman 59NY

59" w x 32" d x 56" hl
KSI ribbon striped Sapele with KSI Dark Mahogany finish
Large work surface with a turret for a switcher
Keyboard/mouse shelf
Rear locking doors with large storage section
Cantilevered "step" with solid bronze trim



Front Elevation

KSI Statesman 12EL-3

32" w x 32" d x 42" to 50" hl
KSI Red Walnut with Black striping and Maple corners
Electrical height adjustment
Side Pull out shelf
Fully recessed swivel casters



Visit our Website at:

www.KSIPRO.com



3403 Sinclair Lane
Baltimore, MD. 21213
410.383.2167 Fax 410.383.7573
Email ksi@ksipro.com